

Edmonton International Airport

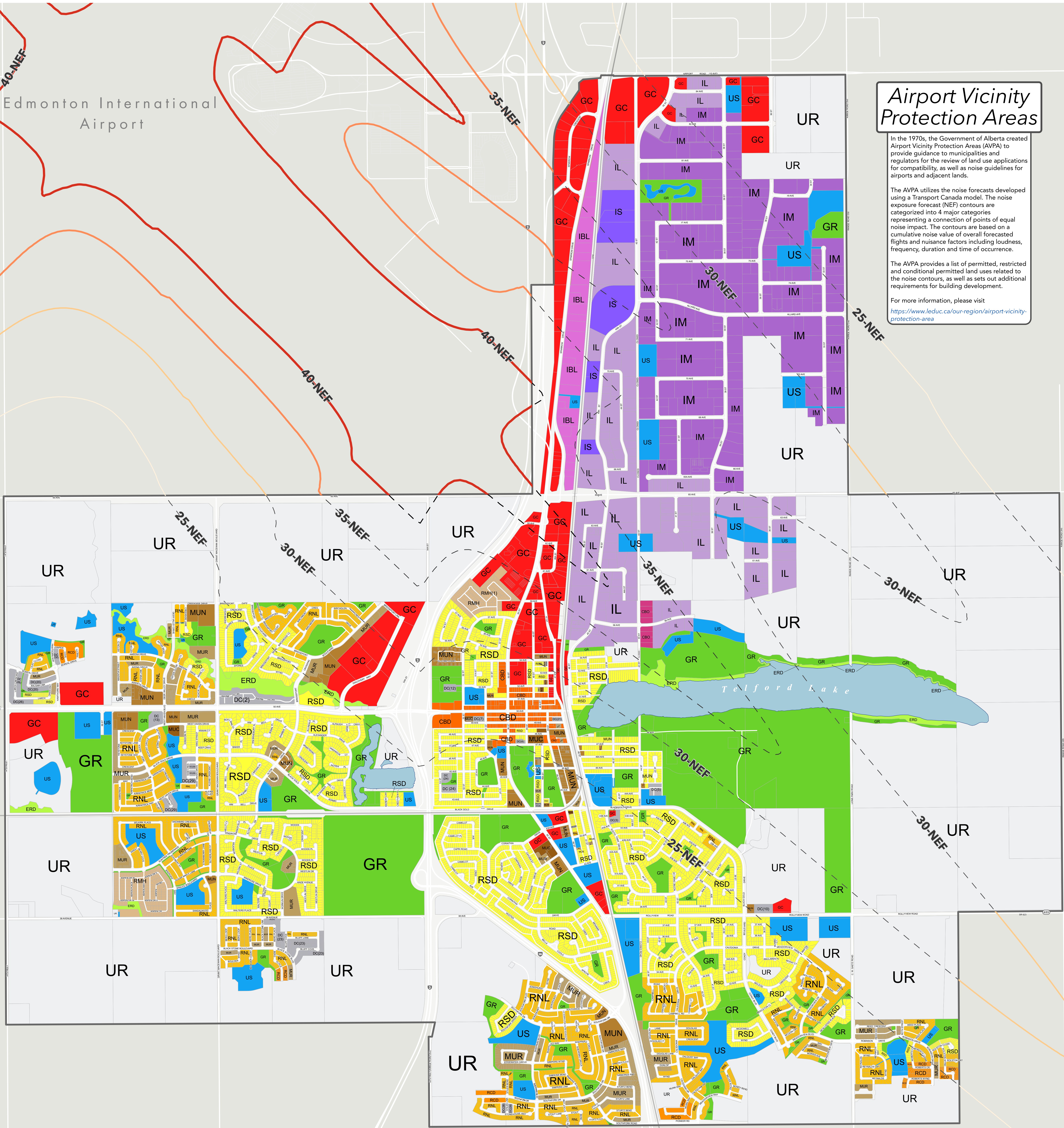
Airport Vicinity Protection Areas

In the 1970s, the Government of Alberta created Airport Vicinity Protection Areas (AVPA) to provide guidance to municipalities and regulators for the review of land use applications for compatibility, as well as noise guidelines for airports and adjacent lands.

The AVPA utilizes the noise forecasts developed using a Transport Canada model. The noise exposure forecast (NEF) contours are categorized into 4 major categories representing a connection of points of equal noise impact. The contours are based on a cumulative noise value of overall forecasted flights and nuisance factors including loudness, frequency, duration and time of occurrence.

The AVPA provides a list of permitted, restricted and conditional permitted land uses related to the noise contours, as well as sets out additional requirements for building development.

For more information, please visit <https://www.leduc.ca/our-region/airport-vicinity-protection-area>



Land Use

	RSD - Residential Standard District		CBD - Central Business District		US - Urban Services
	RNL - Residential Narrow Lot		GC - General Commercial		GR - General Recreation
	RCD - Residential Compact Development		CBO - Commercial Business Orientated		ERD - Environmental Restricted Development
	RMH - Residential Manufactured Home		IBL - Business Light Industrial		UR - Urban Reserve
	MUR - Mixed-Use Residential		IL - Light Industrial		DC - Direct Control
	MUN - Mixed-Use Neighbourhood		IM - Medium Industrial		
	MUC - Mixed-Use Comprehensive		IS - Special Industrial		

AVPA Contours

	NEF - 25
	NEF - 30
	NEF - 35
	NEF - 40

Land Use Overlays

Not all overlays may be shown on the Land Use Bylaw Map. Please refer to Section 18.0 of the Land Use Bylaw or contact the City of Leduc Planning Department for more detailed information.