

How to set out your waste



DO

- Place appropriate materials in bins and follow guidelines on garbage, recycling and organics
- Break down cardboard and put in recycling
- Separate food from packaging before putting food scraps in the organics
- Make sure the bin lid is able to close



DON'T

- Do not over-fill bins
- Never put plastic bags or garbage in the organics
- No household hazardous waste (this can safely be disposed of at the Eco Station)
- No large furniture or bulky items. They can be taken to the Leduc & District Waste Management Facility for disposal.
- Do not park vehicles or block bins for collectors



Sort Smarter **ORGANICS**

Acceptable Items

YES, put these items in our food and yard waste bin.
Take food out of packaging.



All food scraps (raw & cooked)

Plate scraps



Egg shells & dairy products



Meat, fish, shellfish & bones



Jams, sauces, salad dressings & cooking oil



Fruits & vegetables



Pastries, cookies, cakes & muffins



Bread, noodles, rice, beans & grains

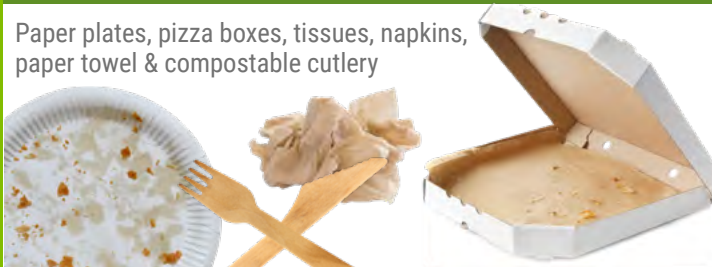


Nuts, seeds, chips, popcorn & candy



Food soiled paper products

Paper plates, pizza boxes, tissues, napkins, paper towel & compostable cutlery



Coffee filters & tea bags



Yard waste & plant materials

Leaves, twigs, branches, plants & weeds



Pet waste*

*Bagged in compostable bags only



Paper products

Shredded paper & cardboard



COMPOSTABLE or PAPER BAGS ONLY:



COMPOSTABLE
IN INDUSTRIAL FACILITIES

NEVER put plastic bags or garbage in the organics.
Sort Smarter so these organics can be turned into valuable compost!

PARTNERING with **nature**

Eco-smart Hotline: 780.980.7107

CITY OF
Leduc
Leduc.ca

Sort Smarter **ORGANICS**

NOT Acceptable

Keep these items out
of the compost bin.



- NO food in packaging** – separate food scraps from container before composting.



- NO plastic bags**



- NO diapers or wipes** – even if they say 'compostable'.



- NO plant pots or bedding trays** – separate plants and soil from container before composting.



- NO foam or plastics**

NEVER put plastic bags or garbage in the organics.

***Sort Smarter* so organics can be turned into valuable compost!**

Sort Smarter **RECYCLABLES**

Acceptable Items

YES, put these items in our recycling bin.
Everything should be clean, dry and empty.



Paper & cardboard



FLATTEN
Cardboard



REMOVE Packaging and
dispose in waste bin

Non-Glass Beverage Containers



Beverage
containers are
refundable at the
bottle depot.



Tin Cans & Lids



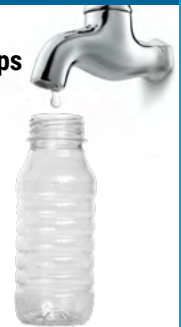
Rigid Plastic Containers



REMOVE and recycle caps
and lids larger than 2".



RINSE All containers



Keep these items out of the recycling bin:

NO paint,
chemicals,
aerosols or
pressurized
tanks. Take to
the Eco Station



NO single-use plastics, foil lids, caps and lids
under 2", pumps and plastic sprayers



Sort Smarter

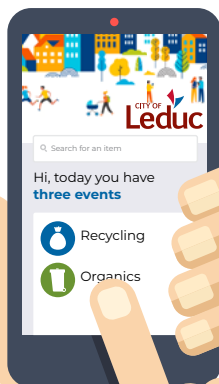
RECYCLING Tools & Services



A-Z Sort Smart Database online at Leduc.ca



FREE sorting and calendar app available from the Apple App Store or Google Play.



ECO STATION

6102 46 Street, Leduc 780.980.7107 ecosmart@leduc.ca



Paint, batteries, aerosol cans, used vehicle oil, scrap metal recycling, propane tanks, clothing and textile donations, florescent bulbs and tubes, tires, electronic waste, household hazardous waste and clean, clear glass.

Leduc & District Waste Management Facility

49444 Range Road 244, Leduc County 780.612.8500



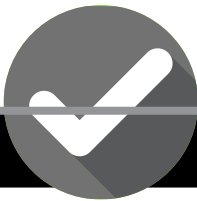
Large items, mattresses, construction/renovation materials, household waste and appliances – including fridges/freezers.

A **resident card** is required to dispose of waste at the Waste Management Facility.
Sign up at <https://leducregionallandfill.ca/cards>

Sort Smarter **WASTE**

Acceptable Items

YES, all items should be bagged before placing in our waste bin.



Styrofoam packaging



Glass & ceramics

Clean clear glass can be taken to the Eco Station.
Broken glass should be bagged.



Mixed packaging & foil



Disposable diapers & wipes



Non-recyclable (single-use) plastics



Plastic lids under 2"

Keep these items out of the waste bin, take them to the Eco Station:



✗ NO paint, chemicals, aerosols or pressurized tanks

✗ NO electronics

