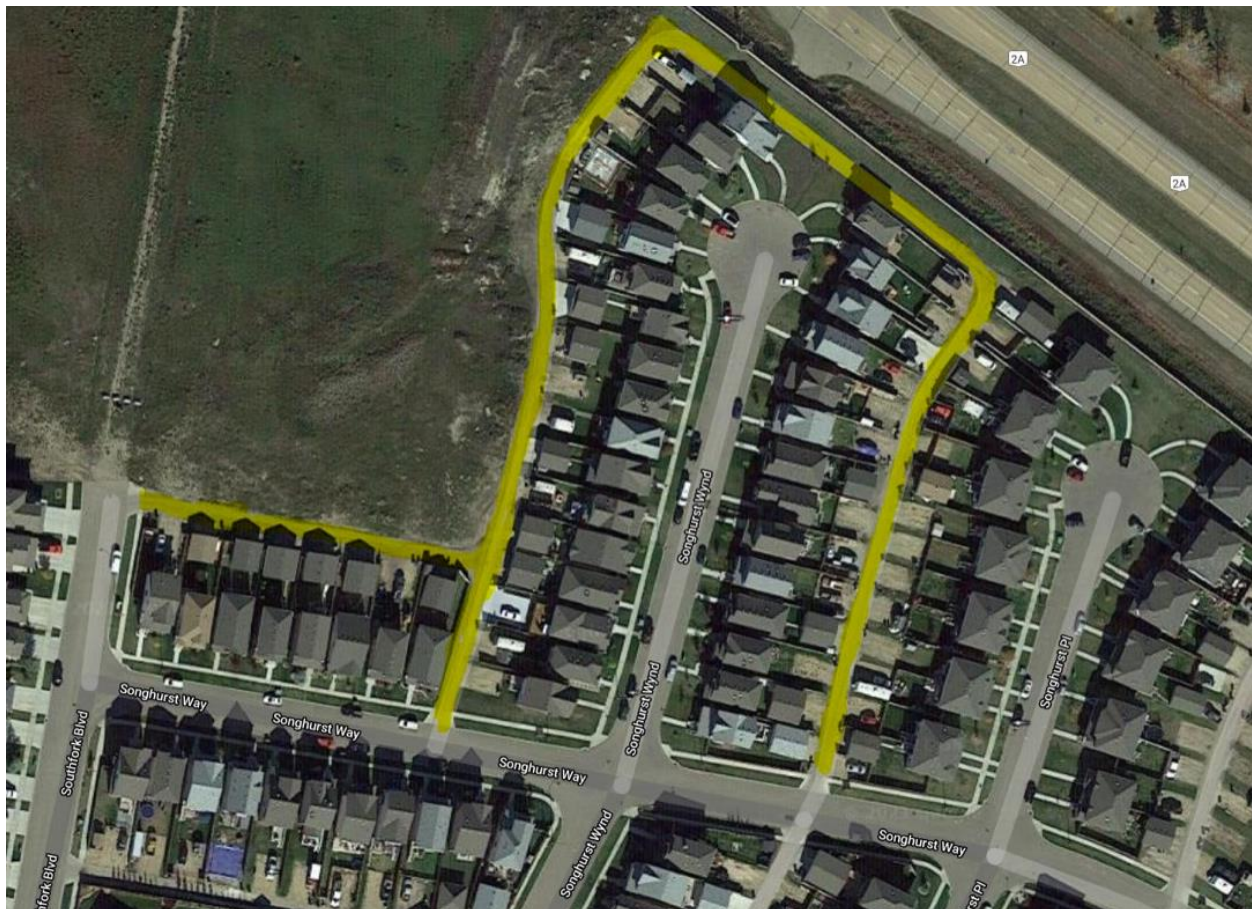


## NOTICE OF CONSTRUCTION

### CITY OF LEDUC - 2021 LANEWAY IMPROVEMENTS SONGHURST WYND – NORTH OF SONGHURST WAY

We would like to inform the residents in the area that the laneway behind your property is scheduled to have asphalt improvements this fall. Please refer to the sketch below for the laneway areas that will have improvements that are currently scheduled to **start the week of August 30<sup>th</sup>**. The lane reconstruction is expected to take three to four weeks and the landscaping will follow. The laneway will be closed once excavation begins and will remain closed while construction is in progress. Once the lane is excavated our crew will do subgrade improvements and continue with gravel installation. After the gravel is in place we will then have our paving crew complete the paving. Any concrete driveways will be poured by a separate crew after the asphalt paving is finished. Any landscape restoration will follow after all hard surfacing is complete.



We kindly ask that if you are a resident within the laneway area being reconstructed that you make any arrangements to have any holiday trailers, boats, vehicles or anything that you will want out of your garage moved prior to August 30<sup>th</sup>.

**Once the laneway excavation starts there will be NO vehicle access for approximately three weeks until the new asphalt is in place.** Once the paving is complete, the lane will still be closed between 7am and 7pm when construction is in progress for any remaining concrete driveway or landscaping. Residents will be expected to park at the front of their property in order to allow for the laneway improvements to proceed. The laneway entrance will be barricaded on the days that work is in progress by any of the crews. **Your garbage bins will need to be put to the front of your property on garbage collection days starting August 30<sup>th</sup> until the paving is complete.**

We ask that residents keep their distance from the equipment and watch their children for all of the obvious safety reasons. Please practice social distancing and maintain 2m separation from any workers. We apologize in advance for any inconveniences due to construction and we thank you for your cooperation during any inconvenient times.

Please refer to the City of Leduc's web page for additional information on this project, <https://www.leduc.ca/construction>. You can find information on this project and others in your community by using the interactive map to navigate your way to the **Back Lane Reconstructions and Overlays** construction information.

If there are any concerns, please contact Andrew Hamilton at 780-453-5841 or in the event of an emergency during construction the following representatives can be contacted:

**Excavation & Gravel Contact**  
**Al Diachuk**  
Cell: 780-818-4745

*Notice Issued: August 20, 2021*