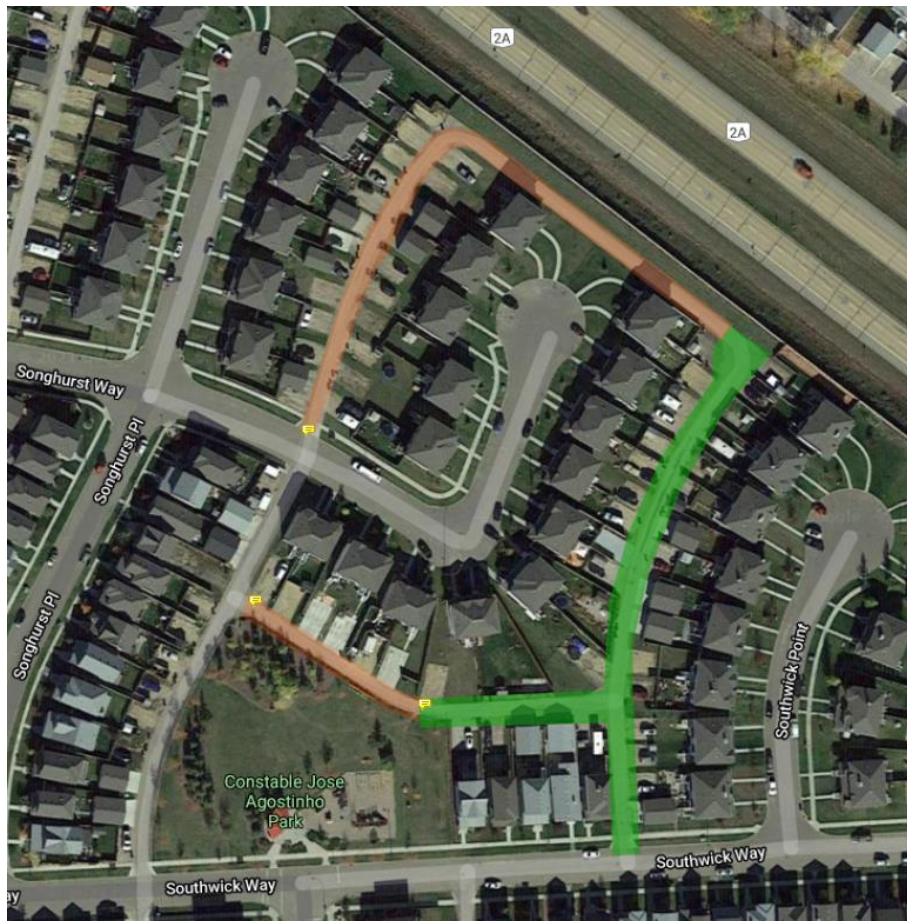


## NOTICE OF CONSTRUCTION

### SOUTHWICK POINT – CONSTRUCTION UPDATE LANEWAY NORTH OF SOUTHWICK WAY

We would like to update the residents in the area regarding the laneway reconstruction for the area shown in **green** on the sketch below. The area of laneway shown was mostly excavated on June 9<sup>th</sup>. Once the site dries enough, we will continue excavating and proceed with the subgrade improvements. We anticipate having the subgrade complete and most of the gravel in by the end of next week. We are impacted by weather and these dates are subject to slide. After the gravel is finished for asphalt, we will then have our paving crew complete the asphalt, which will likely be late in the week of June 21<sup>st</sup>. There will be no concrete to replace, therefore our paving crew will be able to pave both lifts of asphalt consecutively. After the paving is complete, there will be gravel driveway connections to top up. At this point residents will have access again and landscape restoration will happen at a later date. For any landscape restoration or any other construction that is ongoing, we will need to close the lane during the day between 7am and 7am for construction and overnight parking or emergency access will not be an issue once paved.



Please continue to put your garbage bins to the front of your property on garbage collection days for the next couple weeks until the laneway is paved. Our crew will be relocating the garbage bins to a more convenience pick up location and return the bins to the correct address at the end of the day. With our crew relocating garbage bins for garbage collection, you can plan to park on the front street on garbage collection day.

If you do not live within the reconstruction area and you back onto the area shown in **orange**, you are receiving this notice to also plan to put your garbage bin to the front of your property for the next couple weeks. Until the laneway being reconstructed is paved the garbage truck cannot turn around to pick up garbage outside of the reconstruction area. If you live within the **orange** area, we encourage you to park at the back of your property to provide additional street parking for people within the reconstruction area. Keep in mind the **green** area will be closed.

There will be **NO** vehicle access within the **green** area until the paving is complete at the end of June. Once the paving is complete, the lane will still be closed between 7am and 7pm when construction is in progress. Residents will be expected to park at the front of their property in order to allow for the laneway improvements to proceed. The laneway entrance will be barricaded on the days that work is in progress by any of the crews.

We ask that residents keep their distance from the equipment and watch their children for all of the obvious safety reasons. Please practice social distancing and maintain 2m separation from any workers. We apologize in advance for any inconveniences due to construction and we thank you for your cooperation during any inconvenient times.

Please refer to the City of Leduc's web page for additional information on this project, <https://www.leduc.ca/construction>. You can find information on this project and others in your community by using the interactive map to navigate your way to the **Back Lane Reconstructions and Overlays** construction information.

If there are any concerns, please contact Tyler Spence at 780-453-5841 or in the event of an emergency during construction the following representatives can be contacted:

**Excavation & Gravel Contact**  
**Jason Volden**  
Cell: 780-818-2719

*Notice Issued: June 11, 2021*