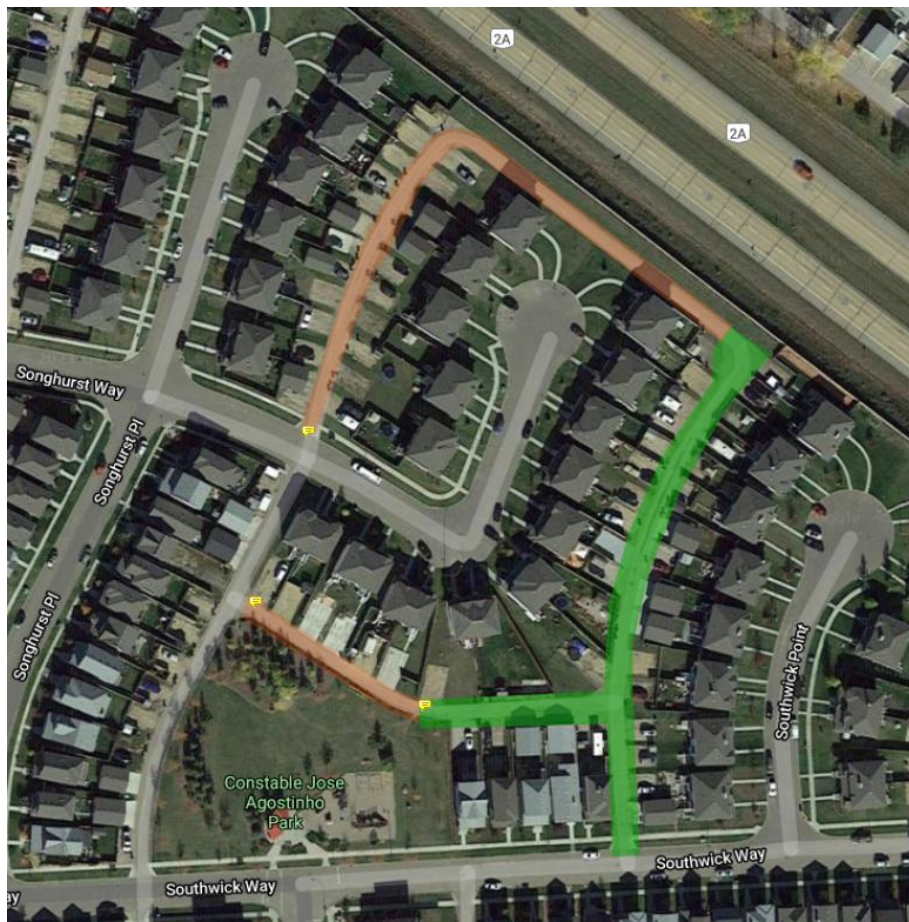


## CONSTRUCTION UPDATE

### SOUTHWICK POINT – LANEWAY NORTH OF SOUTHWICK WAY

We wanted to provide another update to the residents in the area regarding the ongoing laneway reconstruction for the area shown in **green** on the sketch below. Fortunately, the weather has been cooperating and we have been able to advance the paving for the project until Saturday, June 19<sup>th</sup>. Once both lifts of asphalt are complete we will be opening the lane the following morning once the mat has cooled. **Garbage collection will resume as per normal by laneway collection again next week on Monday, June 21<sup>st</sup>.**



The invasive and inconvenient part of the project will be complete once the paving is finished. We will be back to tie in the gravel driveway connections and complete the landscape restoration. We will need to close the lane during the day between 7am and 7am while construction is ongoing for any landscape restoration or any other construction to follow paving for safety reasons. The laneway entrance will be barricaded on the days that work is in progress by any of the crews, but we will be able to get residents into their garages if needed and overnight parking will be available.

We ask that residents continue to keep their distance from the equipment and watch their children for all of the obvious safety reasons. Please practice social distancing and maintain 2m separation from any workers. **Thank-you for your cooperation during this project as this helps the project run smoother!**

Please refer to the City of Leduc's web page for additional information on this project, <https://www.leduc.ca/construction>. You can find information on this project and others in your community by using the interactive map to navigate your way to the **Back Lane Reconstructions and Overlays** construction information.

If there are any concerns, please contact Tyler Spence at 780-453-5841 or in the event of an emergency during construction the following representatives can be contacted:

**Excavation & Gravel Contact**  
**Jason Volden**  
Cell: 780-818-2719

**Paving Contact**  
**Mark Stephens**  
Cell: 780-721-4333

*Notice Issued: June 18, 2021*