

**MINUTES OF LEDUC REGULAR CITY COUNCIL MEETING  
MONDAY, FEBRUARY 26, 2018  
PAGE 13**

---

Present: Mayor B. Young, Councillors B. Beckett, G. Finstad, B. Hamilton, L. Hansen, T. Lazowski and L. Tillack

Also Present: P. Benedetto, City Manager, and S. Davis, City Clerk

Mayor B. Young called the meeting to order at 7:05 pm.

Mayor B. Young made a proclamation that, in support of anti-bullying, Wednesday, February 28<sup>th</sup>, 2018, is PINK SHIRT DAY in the City of Leduc.

**I. ADOPTION OF AGENDA**

**MOVED** by Councillor B. Hamilton that the Agenda be adopted as presented.

Motion Carried Unanimously

**II. ITEMS FOR DISCUSSION AND RELATED BUSINESS**

**A. Selected Items for Debate**

The following items were selected for debate:

**VIII. BUSINESS**

A. Recreation & Culture Facility Needs Assessment

**XIII. UPDATES FROM BOARDS & COMMITTEES**

A. Council Member Updates from Boards & Committees

(i) Leduc Environmental Advisory Board Letters – Light Pollution

**B. Vote on Items not Selected for Debate**

Votes recorded under item headings.

**III. ADOPTION OF PREVIOUS MINUTES**

**A. Approval of Minutes of the Regular Council Meeting held Monday, February 12, 2018**

**MOVED** by Councillor G. Finstad that the minutes of the Regular Council Meeting held Monday, February 12, 2018, be approved as presented.

Motion Carried Unanimously

**MINUTES OF LEDUC REGULAR CITY COUNCIL MEETING  
MONDAY, FEBRUARY 26, 2018  
PAGE 14**

---

**IV. RECOGNITION ITEMS**

There were no recognition items.

**V. PUBLIC COMMENTARY**

R. Luke, a resident of Willow Park, expressed a concern about the lack of visibility of Enforcement Services in the City. R. Luke requested that City Council call for an independent review of the City of Leduc Enforcement Services.

Mayor B. Young advised R. Luke that the matter will be referred to D. Melvie, General Manager, Community and Protective Services.

D. Malin and T. Malin, residents of Caledonia, expressed concern about parents dropping off and picking up their children at the school. The parents speed, doubt and triple park and drive on both sidewalks and the lawns of residents. The speed on 39 Avenue is 50 km/hr and not 30 km/hr, and there is also concern that a student will be hit. D. Malin provided photographs to M. Pieters, General Manager, Infrastructure and Planning.

S. Olson, Director, Engineering, advised that in December of 2016 the Traffic Advisory Committee was requested to put a cross walk in at 33<sup>rd</sup> Ave, however, as a City crosswalks are not placed on residential streets as it can desensitize people to crosswalks. At that time Community Peace Officers were requested have an increased presence.

S. Olson will have the Traffic Advisory Committee review the matter once again.

**VI. PUBLIC HEARING**

There were no public hearings.

**VII. PRESENTATIONS**

**A. Office of Traffic Safety, Alberta Transportation**

D. Tona, Team Lead, Office of Traffic Safety, made a PowerPoint presentation (Attached) and answered Council's questions.

The Office of Traffic Safety have creative files to promote traffic safety are available for use by all municipalities free of charge. D. Tona provided two examples (Attached).

D. Tona offered to assist with an educational component, and to facilitate a meeting with between an Alberta Transportation representative and the City of Leduc, relative to safety issues on the QEII. D. Tona advised that traffic safety on major roadways is a concerned shared by a number of municipalities throughout the Province.

Council stated that they are encouraged to see the initiative that has been put in place by Alberta Transportation.

**MINUTES OF LEDUC REGULAR CITY COUNCIL MEETING  
MONDAY, FEBRUARY 26, 2018  
PAGE 15**

---

**VIII. BUSINESS**

**A. Recreation & Culture Facility Needs Assessment (“Assessment”)**

M. Roma and S. Slawuta, RC Strategies & Professional Environmental Recreation Consultants, made a PowerPoint presentation (Attached) which outlined seven to eight months of work on the Assessment.

M. Roma and S. Slawuta answered Council's questions.

**MOVED** by Councillor B. Beckett that Council adopt the City of Leduc Recreation and Culture Facility Needs Assessment and support the principles and priorities outlined in the report be applied to the upcoming facility master planning process and, ultimately, the City's investment in facilities to enhance the recreation and culture service delivery system of the community.

Motion Carried Unanimously

**IX. BYLAWS**

There were no Bylaws.

**X. PUBLIC COMMENTARY**

There was no public commentary.

**XI. IN-CAMERA ITEMS**

There were no In-Camera items.

**XII. RISE AND REPORT FROM IN-CAMERA ITEMS**

**XIII. UPDATES FROM BOARDS & COMMITTEES**

**A. Council Member Updates from Boards & Committees**

**(i) Leduc Environmental Advisory Board (“LEAB”) Letters – Light Pollution**

Councillor L. Hansen presented the two letters that LEAB drafted up – one will go to all local media and the second will go out to residents with a goal to have lights bulbs replaced with efficient LED light bulbs. Fortis is currently changing the bulbs in street lights over to LED light bulbs, and now the push is on to have businesses, building owners and residents do the same.

**MINUTES OF LEDUC REGULAR CITY COUNCIL MEETING  
MONDAY, FEBRUARY 26, 2018  
PAGE 16**

---

Council was very supportive of the initiative and contributed suggestions for enhancing the message going out.

**B. Council Member Updates from Commissions, Authorities, Other**

There were no updates.

**XIV. INFORMATION REPORTS**

**A. Mayor's Report**

There was no discussion.

**XV. ADJOURNMENT**

The Council meeting adjourned at 8:36 pm.

"Original Signed"

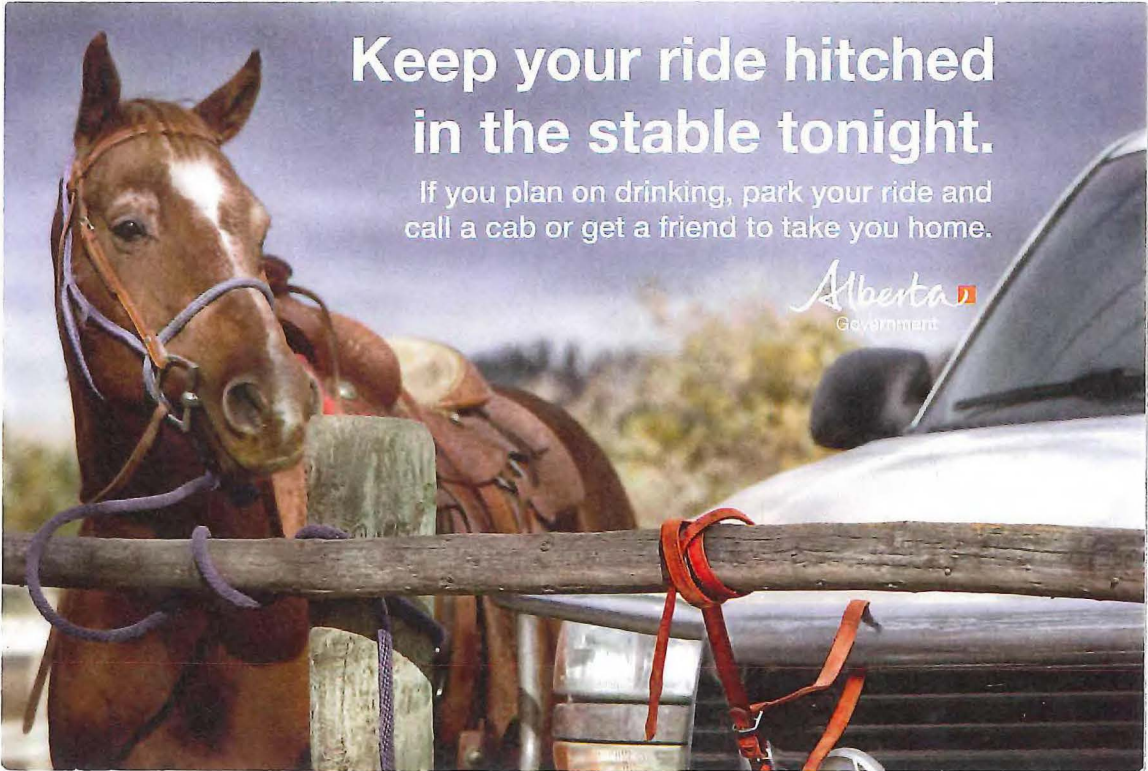
---

B. Young  
MAYOR

"Original Signed"

---

S. Davis  
CITY CLERK



## Keep your ride hitched in the stable tonight.

If you plan on drinking, park your ride and  
call a cab or get a friend to take you home.

Alberta  
Government

## Community Mobilization Program

*We strive to mobilize Alberta communities to embrace and achieve Vision Zero.*

We can help you

- Identify local partners, resources, and champions
- Learn and build new skills
- Connect and share with others across Alberta
- Find or develop tools and resources
- Apply for Alberta Traffic Safety Fund grants

Contact us at [communitymobilization@saferoads.com](mailto:communitymobilization@saferoads.com)

**Take action in your community!**



**WHEN EYES LOCK IT'S SAFER TO WALK.**

Pedestrian safety is a shared responsibility.

*Alberta* ■



## **Community Mobilization Program**

*We strive to mobilize Alberta communities to embrace and achieve Vision Zero.*

We can help you

- Identify local partners, resources, and champions
- Learn and build new skills
- Connect and share with others across Alberta
- Find or develop tools and resources
- Apply for Alberta Traffic Safety Fund grants

Contact us at [communitymobilization@saferoads.com](mailto:communitymobilization@saferoads.com)

**Take action in your community!**



# **Municipal Delegation Package Alberta Office of Traffic Safety**

Presented to The City of Leduc  
Mayor Bob Young  
CAO Paul Benedetto



## **Delegation Points of Discussion**

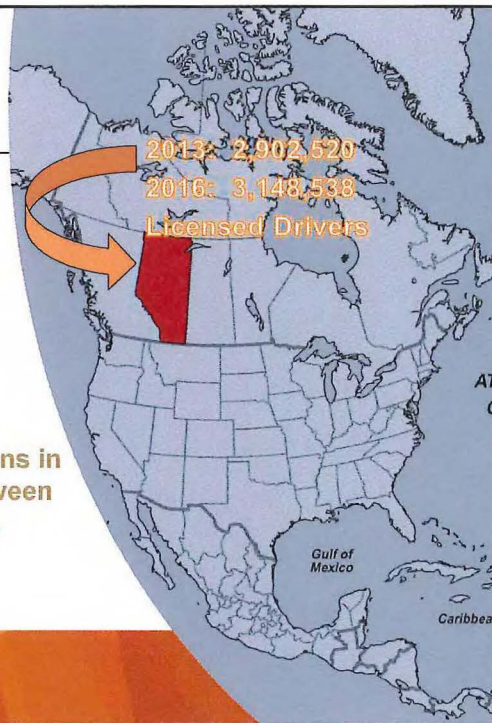
Office of Traffic Safety  
Vision Zero  
Community Mobilization  
Key Resources  
Office of Traffic Safety  
Creative



## Alberta Road Safety 2012-2016

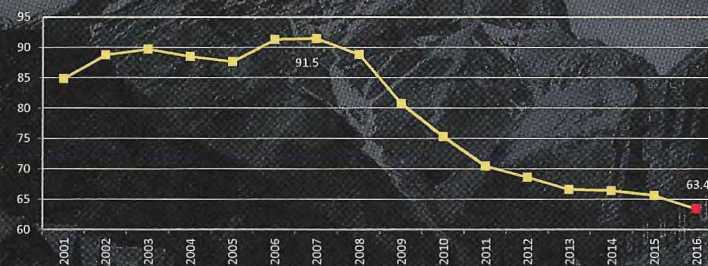
- Population ↑ 9.8%
- Number of drivers ↑ 8.9%
- Registered vehicles ↑ 7.7%
- Hwy traffic volumes ↑ 8.4%

In 2015, the social cost of collisions in Alberta was estimated to be between \$4.6 billion and \$10.3 billion.



Alberta

Alberta Combined Fatal & Major Injury Collision Rate  
per 100,000 Population



Rates are based on a rolling three-year average combined fatal & major injury collision rate per 100,000 population for the current and two previous years.

But one thing is clear.  
We must continue to explore good practices to expect continued results.

Alberta



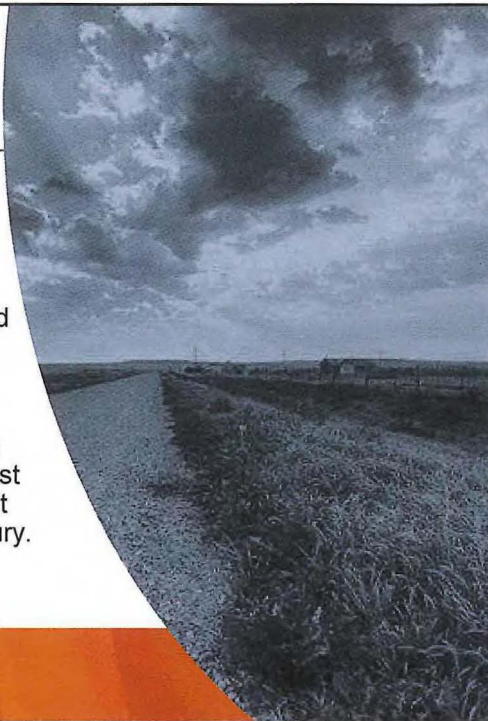
## Office of Traffic Safety

### Vision Zero

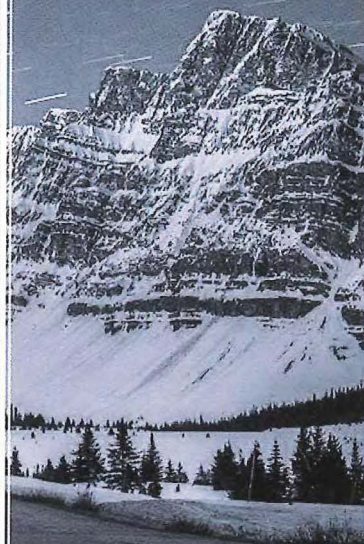
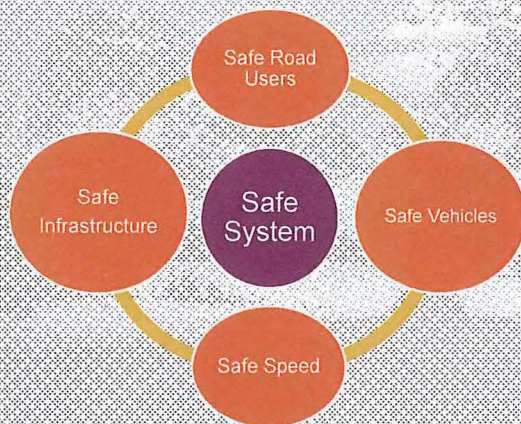
Zero deaths and serious injuries on Alberta's roads.

- We do not accept that fatalities and serious injuries on our roads are inevitable or acceptable.
- We will strive to create a system in which safe decisions are the easiest ones to make and mistakes are not punished with death or serious injury.

Alberta



## Safe System Approach



PAUL ZENK

## Community Mobilization

### Vision

Mobilize Alberta communities to embrace and achieve Vision Zero.

### Outcomes

- Encourage shared responsibility for traffic safety
- Build community capacity to address safety priorities
- Inspire and enable collective action to improve safety

Alberta



## Key Resources

### Community Mobilization Consultants

- [communitymobilization@saferoads.com](mailto:communitymobilization@saferoads.com)

### Alberta Traffic Safety Fund (ATSF)

- [www.saferoads.com/grants](http://www.saferoads.com/grants)
- [atsf@gov.ab.ca](mailto:atsf@gov.ab.ca)

### Saferoads.com

- Information and free resources to download/order

Alberta





## Available Creative

Alberta

Maximum height of your logo

Leave space from edge of graphic

Place your logo starting here

**WHEN EYES LOCK IT'S SAFER TO WALK.**  
Pedestrian safety is a shared responsibility.

WHEN EYES LOCK IT'S SAFER TO WALK.  
Pedestrian safety is a shared responsibility.

WHEN EYES LOCK IT'S SAFER TO WALK.  
Pedestrian safety is a shared responsibility.

Alberta

## Available Creative

**UNSAFE LEFT TURN RD**  
**RCE RD ROLLING STOP**

**UNSAFE LEFT AVE**  
**RAN A RED ST**

EVERY BAD HABIT COLLIDES IN AN INTERSECTION.  
It takes the eyes of many, not just one, to keep the roads safe. It's a shared responsibility.

EVERY BAD HABIT COLLIDES IN AN INTERSECTION.  
Leave, move, roll and it's safe to turn and start over and again.

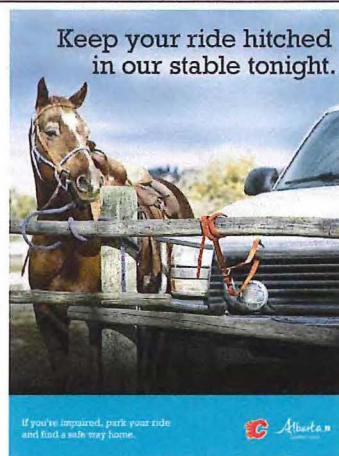
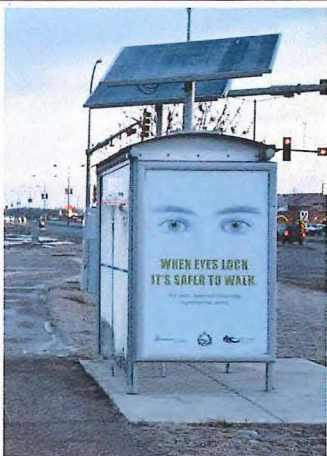
Alberta

Alberta

...and more to come!

Alberta

## Past Community Examples



Alberta

## Contacts

For creative files:

[OfficeOfTrafficSafety@gov.ab.ca](mailto:OfficeOfTrafficSafety@gov.ab.ca)

For Community Mobilization support:

[CommunityMobilization@saferoads.com](mailto:CommunityMobilization@saferoads.com)

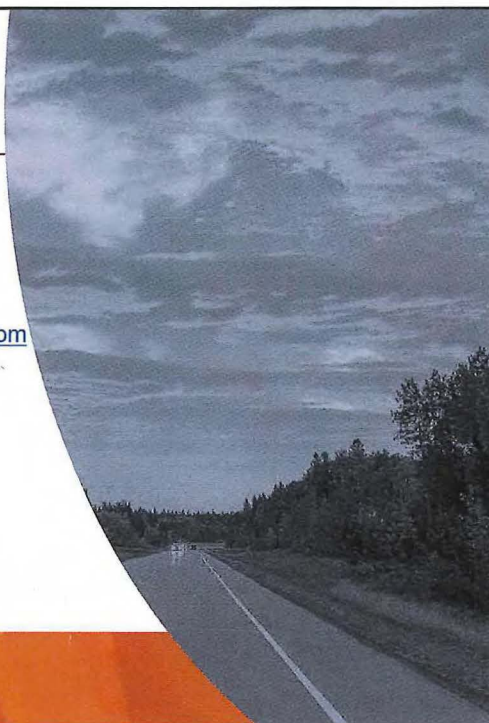
For Alberta Traffic Safety Fund:

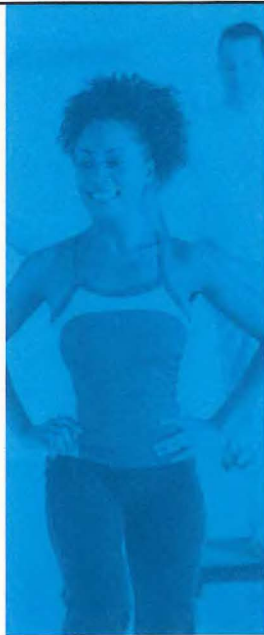
[atsf@gov.ab.ca](mailto:atsf@gov.ab.ca)

For any other questions:

[OfficeOfTrafficSafety@gov.ab.ca](mailto:OfficeOfTrafficSafety@gov.ab.ca)

Alberta





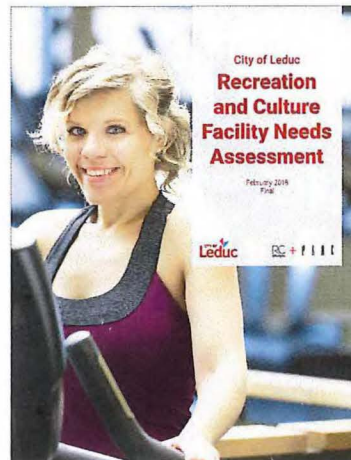
# City of Leduc Recreation and Culture Facility Needs Assessment

Council Presentation  
February 26, 2018



## Agenda

1. Project Process
2. Key Findings
3. Amenity priorities and recommendations
4. Questions





## Project Process

### Phase 1: Data Gathering and Analysis

- Policy and Background Planning Review
- Benchmarking Research
- Trends and Leading Practices Analysis
- Population and Demographics Analysis
- Inventory and Utilization Analysis



### Phase 2: Public and Stakeholder Consultation

- Resident Survey
- Community Group Questionnaire
- Stakeholder and Facility User Consultation



### Phase 3: Reporting and Recommendations

- Analysis, Visioning, and Direction Setting
- Draft Needs Assessment
- Review
- Final Needs Assessment

- Draft Needs Assessment refined with input from the PRC Committee, Council and administration.
- Final Needs Assessment document has been delivered.

## Project Process

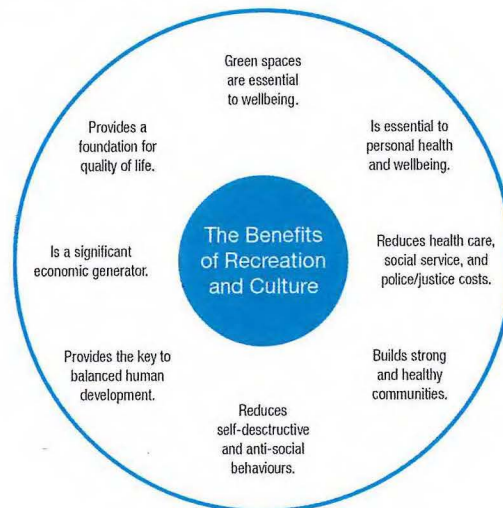
### Engagement

Engagement Mechanism	Participation
Resident Survey	Coded Survey (password required): 393 Responses Open Public Survey (no password required): 132 Responses
Community Group Questionnaire	22 Responses
Stakeholder Interviews and Small Group Discussion Sessions	42 Participating Organizations/Groups

### Research

- Review of utilization data
- Trends and leading practices
- Benchmarking
- Population and demographics
- Inventory

## Key Findings



## Key Findings

### Engagement

Recreation and culture opportunities are **highly valued** and important to residents.

**Satisfaction** levels are high.

Facilities like the **library, pool, arenas, fitness centre, and track at the LRC** see the highest levels of household utilization.

## Key Findings

### Engagement

While there is recognition that the City has made a significant investment over the previous ~10 years, **demand exists for new and enhanced facilities.**

There is a perception that recreation has been prioritized more than arts and culture.

## Key Findings

### Engagement

Top **resident preferences** for new and enhanced facilities include:

1. leisure pools,
2. indoor child play spaces,
3. fitness/wellness facilities,
4. multiway trails, and
5. natural areas.

## Key Findings

### Engagement

Top **community organization preferences** for new and enhanced facilities include:

1. meeting spaces,
2. group office spaces,
3. arts and culture program spaces,
4. special event areas, and
5. multi-ways/trails.

## Key Findings

### Engagement

**Financial barriers** to participation exist for some residents.

There is **some willingness** among residents to pay increased taxes for new or enhanced facilities.

## Key Findings

### Research

Continued high rates of **growth** (City and catchment area).

Benchmarking research suggests that **Leduc is comparable** to similar sized communities for most facility and amenity types, but expectations will evolve as the community grows.

- Communities of > 60,000 typically provide: artificial turf fields, 50m pools, performance baseball stadiums, and art and cultural centers (major "hub" facility)
- Communities > 60,000 typically provide multiples of: library branches, water spray parks, skateboard parks, indoor pools, indoor walking/running tracks, and fitness centres

## Key Findings

### Research

Key trends:

- Importance of providing **spontaneous / unstructured** opportunities
- **Accessibility** to opportunity is important (financial, physical, social).
- Connecting with **nature**.
- **Inactivity** and associated health issues.



## Key Findings

### Research

Key trends:

- Evolving nature of **volunteerism**.
- **Aging** infrastructure.
- **Multi-use** and multi-functional facilities.
- **Partnerships** to meet growing demands (e.g. with community groups, schools and regional municipalities *\*Modernized MGA*).

## Amenity Priorities and Recommendations

The Needs Assessment identifies:

- A **ranking** of recreation and culture facility/amenity priorities.
- **Additional recommendations** for consideration to optimize current provision and inform future planning.

*\*Future City planning (update of the 2013 Long Term Facilities Master Plan) will further refine and detail priorities in the context of other city projects and service areas.*

## Amenity Rankings

The rankings have been developed using **criteria** and associated scoring metrics.

The criteria and scoring metrics are **based on the engagement and research** findings and additional considerations.

Community demand indicators outline how research and engagement findings related to amenity prioritization.

The Amenity Prioritization Framework outlines other considerations necessary for decision-making regarding public investment.

Amenities are scored based on criteria and metrics outlined in the Amenity Prioritization Framework.

Amenity priorities are identified in a transparent and responsible way to guide future decision-making.

## Amenity Rankings

### Indoor

Amenity	Rank
Fine Arts Spaces (e.g. studios, galleries, etc.)	1
Indoor Child Play Spaces	2
Program Spaces (multi-use, i.e. yoga, aerobics, etc.)	2
Leisure Swimming Pool	3
Multi-purpose Sport Surface (e.g. cement pad for roller/ball hockey, roller derby, lacrosse)	4
Seniors Activity Spaces	5
Historical Display Spaces	5
Youth Centre Spaces	6
Indoor Ice Arena Sports Facilities	7
Indoor Courts/Gymnasium Spaces (e.g. tennis, basketball, volleyball, etc.)	8
Meeting Spaces	8
Fitness/Wellness Facilities (e.g. Aerobics/Strength Training)	9
Agricultural Facilities	10



## Amenity Rankings

### Indoor

Amenity	Rank
Indoor Event Facilities (dedicated)	10
Indoor Field Sports (e.g. soccer)	10
Lane Swimming Pool	11
Show Facilities (e.g. concerts/trade fairs)	11
Community Group Office Spaces	12
Court Sports (e.g. racquetball/squash)	13
Library	13
Social/Banquet Facilities	13
Indoor Ice Leisure Skating	14
Performing Arts Theatre	15
Indoor Track for Fitness/Jogging/Walking	15
Combative Sports space (e.g. judo, karate)	16
Dance Program Spaces	17

## Amenity Rankings

### Indoor

Amenity	Rank
Indoor Pool Climbing Wall	18
Indoor Curling Facilities	19
Rifle/Archery Range	20

## Amenity Rankings

### Outdoor

Amenity	Rank
Outdoor Bandstands/Amphitheatres	1
Natural Areas	2
Multi-Use Trails (non-mechanized)	3
Toboggan Hills	4
Event Grounds for Special Events	5
More Trees	5
BMX Bicycle Parks	6
Playgrounds and Tot Lots	6
Dog Walking Areas	7
Mountain Bike Park	8
Outdoor Recreation Skating	9
Picnic Areas	10
Hard Surfaces	10

## Amenity Rankings

### Outdoor

Amenity	Rank
Outdoor Water/Spray Parks	11
Soccer Fields	11
Winter Skating Trails	11
Football Fields	12
Fire Pits	13
Ornamental Parks	13
Tennis Courts/Pickleball Courts	13
Skateboard Parks	13
Downtown Landscaping	14
Pickleball Courts	15
Outdoor Swimming Pool	16
Agricultural Areas (i.e. Equestrian Areas)	16
Cross Country Ski/Snowshoe Trails	17

## Amenity Rankings

### Outdoor

Amenity	Rank
Campgrounds (with services)	17
Heritage Preservation Areas	17
Rugby Fields	17
Ball Diamonds	18

## Additional Recommendations

Continue to place a **priority on sustaining and refreshing existing** recreation and culture infrastructure.

Undertake **further analysis on the top ranked amenities** identified in the Amenity Prioritization Framework.

## Additional Recommendations

Work with stakeholders, community partners and user groups to **address storage issues** and identify other **opportunities to make more effective use of existing facility spaces**.

Continue to **collaborate and communicate with regional municipalities**. Where possible, identify opportunities to encourage use of under-utilized facilities in the region.



## Additional Recommendations

Refresh **allocation and fee procedures and policies** for high use amenities such as ice arenas, sport fields and the field house/court space.

- Where possible, apply Canadian Sport for Life and Long Term Athlete Development principles.

**Geographic balance** should be a key consideration and priority when determining future projects and priorities.



## Additional Recommendations

Develop a more rigorous **classification system** for all recreation and culture assets.

The City will need to find the balance between hours booked and people served in order to accurately determine and compare **utilization data** to use as a trigger for future facility development priorities.

## Thank You!