



LEDUC COUNTY & CITY OF LEDUC
JOINT COMMITTEE-OF-THE-WHOLE MEETING



MINUTES OF THE JOINT CITY OF LEDUC/LEDUC COUNTY COUNCIL MEETING,
HELD AT 5 PM ON MONDAY, OCTOBER 1, 2018,
AT THE CITY OF LEDUC CIVIC CENTRE, LEDUC, ALBERTA

Leduc County

- Mayor T. Doblanko
- Councillor K. Lewis
- Councillor K. Vandenberghe
- Councillor L. Wanchuk
- Councillor G. Belozar
- Councillor R. Scobie
- Councillor R. Smith
- D. Coleman, County Manager

City of Leduc

- Mayor B. Young
 - Councillor B. Beckett
 - Councillor G. Finstad
 - Councillor B. Hamilton
 - Councillor L. Hansen
 - Councillor T. Lazowski
 - Councillor L. Tillack
 - P. Benedetto, City Manager
 - S. Davis, City Clerk
-

1. CALL TO ORDER

Mayor B. Young called the meeting to order at 5:13 pm.

2. ADOPTION OF AGENDA

MOVED by Councillor L. Wanchuk that the Committee approve the agenda as presented.

Motion Carried Unanimously

3. APPROVAL OF PREVIOUS MINUTES

a) Approval of Minutes of the Joint Leduc County/City of Leduc Committee-of-the-Whole Meeting held Tuesday, June 26, 2018

MOVED by Mayor T. Doblanko that the minutes of the Joint Leduc County/City of Leduc Committee-of-the-Whole meeting held Tuesday, June 26, 2018, be approved as presented.

Motion Carried Unanimously

4. BUSINESS

a) Overview of Respective Strategic Plans

Mayor T. Doblanko provided a copy of the Leduc County Strategic Plan ("Plan") (Attached), which was created by Leduc County Council. Mayor T. Doblanko, Councillor K. Vandenberghe and Councillor G. Belozer, provided Committee members with an overview highlighting various items contained in the Plan.

Mayor B. Young made a PowerPoint presentation (Attached) providing an overview of the City of Leduc Strategic Plan, and provided a copy of the 2019 – 2022 Strategic Plan (Attached). Mayor B. Young and Councillor G. Finstad also provided information relating to the development, and focus, of the Strategic Plan.

Mayor T. Doblanko and Mayor B. Young answered the Committee's questions.

b) Leduc-Nisku Economic Development Association ("LNEDA") Discussion

Mayor T. Doblanko made a presentation outlining concerns and questions Leduc County has relative to the LNEDA.

MOVED by Councillor G. Finstad that the Committee-of-the-Whole meeting move In-Camera pursuant to s.16 & 25 of the *FOIP Act* at 5:53 pm.

Motion Carried Unanimously

MOVED by Councillor G. Finstad that the Committee-of-the-Whole meeting move In-Public at 6:10 pm.

Motion Carried Unanimously

Discussion ensued relative to future of both the LNEDA and economic development in the region.

c) Airport Accord Transit Funding

M. Pieters, General Manager, Infrastructure and Planning, City of Leduc, and R. Thomas, Deputy County Manager and General Manager, Community and Protective Services, Leduc County, made a presentation on the discussions that took place at the Oversight Committee meeting relative to transit routes and funding. Discussion took place emphasizing the need for all parties to have a common understanding of the relationship between ridership numbers (revenue) and the cost of ridership (operation) on all routes, including the internal route.

M. Pieters, Mayor T. Doblanko, Mayor B. Young, and I. Sasyniuk, General Manager, Corporate Services, City of Leduc answered the Committee's questions.

d) Shared Investment/Shared Benefit Update

J. Evans, Manager, Long Range Planning, Leduc County made a PowerPoint presentation (Attached) and answered the Committee's questions.

Mayor T. Doblanko and Mayor B. Young commented on the accomplishments of the Project Manager and the Accord Working Group within a very short time.

e) 65 Avenue/Nisku Spine Road Discussion

D. Coleman, County Manager, Mayor B. Young, M. Hay, Director, Intergovernmental Affairs and Corporate Planning, City of Leduc, and P. Benedetto, City Manager, made a presentation on the funding strategies, and advocacy efforts, relative to 65 Avenue/Nisku Spine Road and Highway 19. It is important to promote these roadways as a regional transportation corridor that is required to move goods and services. This strategy may increase the ability to optimize external funding.

Mayor B. Young, Mayor T. Doblanko and P. Benedetto answered the Committee's questions.

MOVED by Councillor G. Finstad and Seconded by Councillor R. Scobie that Administration be directed to work on joint messaging relative to the Regional Transportation Corridor.

Motion Carried Unanimously

MOVED by Councillor B. Beckett and Seconded by Councillor G. Belozer that Administration be directed to develop a Regional Transportation Plan relative to advocacy, funding, phasing and potential partnerships.

Motion Carried Unanimously

5. IN-CAMERA ITEMS

There were no in-camera items.

6. NEXT MEETING DATE

December 12, 2018, at the Nisku Recreation Centre.

7. ADJOURNMENT

The meeting adjourned at 6:50 pm.

"Original Signed"

T. Doblanko
MAYOR, LEDUC COUNTY

"Original Signed"

D. Coleman
COUNTY MANAGER, LEDUC COUNTY

"Original Signed"

B. Young
MAYOR, CITY OF LEDUC

"Original Signed"

P. Benedetto
MANAGER, CITY OF LEDUC



LEDUC COUNTY 2018-2021

STRATEGIC PLAN



MISSION, VISION, VALUES AND COMMITMENTS

MISSION

Leduc County is dedicated to serving its citizens and will create an enhanced quality of life through effective leadership, committed partnerships and open, transparent communication.

VISION

Leduc County is a leading member of the Edmonton Metropolitan Region. Leduc County offers an economic advantage, sustainable agricultural network, environmental leadership and an unsurpassed quality of life.

VALUES AND COMMITMENTS

Leduc County believes in:

- ▶ our citizens
- ▶ serving our communities
- ▶ making ethical decisions
- ▶ seeking fairness and equitability
- ▶ pursuing innovation

By being true to these core beliefs, we will realize our commitment to:

- ▶ working for our citizens
- ▶ leading by example
- ▶ achieving positive results
- ▶ maintaining balanced and responsive budgets

MESSAGE FROM COUNCIL



Back row (L to R): Councillor Glenn Belozer, Councillor Kelly Vandenberghe and Councillor Rick Smith.
Front row (L to R): Mayor Tanni Doblanko, Councillor Ray Scobie, Councillor Larry Wanchuk and Councillor Kelly-Lynn Lewis.

It is an honour and great responsibility to be elected to lead Leduc County for the next four years.

During the 2017 municipal election campaign, we spoke with many of you about your priorities for Leduc County. During these discussions, it became clear to us that change was needed and the county must follow a more innovative path forward. This strategic plan describes what we heard from you, and how we will build the county that you envision. We have identified five strategic priorities to guide our actions and decisions during our term as your elected officials.

Leduc County is a key player in the changes that are taking place in the Edmonton Metropolitan Region, and we will continue to be leaders during these important regional discussions. We will work hard to make our county and the region stronger and more prosperous, and will make the decisions necessary to achieve our goals.

We need your support to achieve these goals, and look forward to your involvement in building our future together.

- Leduc County mayor and councillors

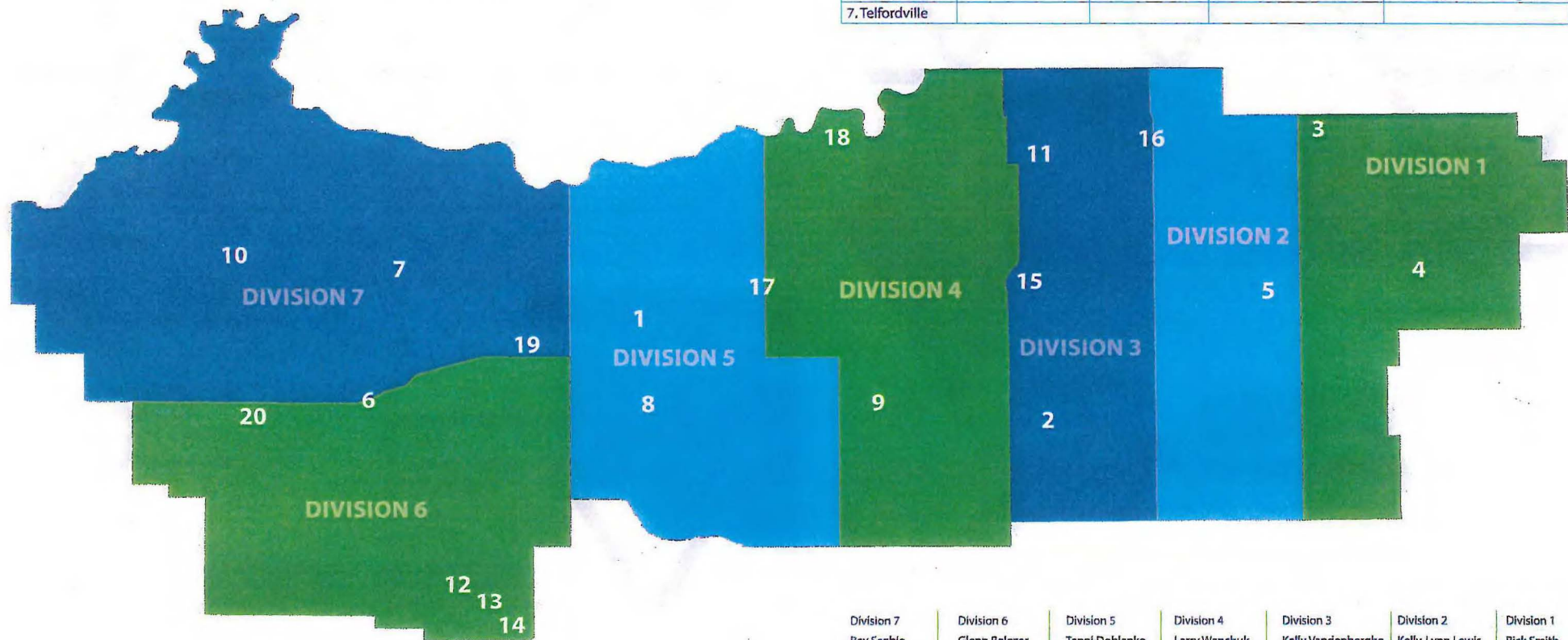
LEDUC COUNTY TODAY

DEMOGRAPHICS AND GROWTH

POPULATION: 13,780 (2016 CENSUS)

GROWTH: LEDUC COUNTY'S ECONOMIC DEVELOPMENT AND GROWTH MANAGEMENT STRATEGY
(2016) PROJECTS A POPULATION BETWEEN **40,225** AND **44,766** BY 2045.

HAMLETS	LOCALITIES	BUSINESS PARKS	SUMMER VILLAGES (MUNICIPALITIES WITHIN LEDUC COUNTY'S BORDERS)	MUNICIPALITIES WITHIN LEDUC COUNTY'S BORDERS
1. Buford	8. Glen Park	11. Nisku	12. Sundance Beach	15. City of Leduc
2. Kavanagh	9. Michigan Centre		13. Itaska Beach	16. Town of Beaumont
3. Looma	10. St. Francis		14. Golden Days	17. Town of Calmar
4. New Sarepta				18. Town of Devon
5. Rolly View				19. Town of Thorsby
6. Sunnybrook				20. Village of Warburg
7. Telfordville				



Division 7
Ray Scobie
780-955-4567

Division 6
Glenn Beloner
780-955-4566

Division 5
Tanni Doblanko
780-955-4565

Division 4
Larry Wanchuk
780-955-4564

Division 3
Kelly Vandenberghe
780-955-4563

Division 2
Kelly-Lynn Lewis
780-955-4562

Division 1
Rick Smith
780-955-4561

STRATEGIC PRIORITIES

1. ENRICHED QUALITY OF LIFE

Leduc County continually enhances the quality of life for its citizens by increasing the capacity and accessibility of recreational, tourist and cultural activities and attractions.

FOCUS AREAS

FOCUS AREAS	TIMELINE
1.1 Develop a plan framework to meet growth and program needs for recreation, tourism and culture.	Q4 2020
1.2 Maintain existing partnerships and pursue new partnership opportunities with other municipalities to leverage county investment.	Q4 2018
1.3 Offer affordable county-sponsored programs and activities to all citizens.	Q1 2018

KEY PERFORMANCE INDICATORS

1. Adopt a strategic approach to community building that identifies community needs, access to services and financial sustainability.
2. Increase collaborative efforts among local governments, voluntary organizations and individuals that support and nurture a vibrant recreation system for community service provision.
3. Develop strategies and policies so all families and individuals in Leduc County have access to community programs and services.



**DID YOU KNOW?
THERE ARE 1088
FARMS IN LEDUC
COUNTY**

SOURCE: 2016 CENSUS OF AGRICULTURE



2. AGRICULTURAL INNOVATION AND SUPPORT FOR LOCAL FOOD

Leduc County encourages and supports agricultural innovation, the protection of agriculture land, agribusiness and local food initiatives.

FOCUS AREAS

FOCUS AREAS	TIMELINE
2.1 Develop a plan framework for the re-visioning of smallholding agricultural activity.	Q2 2020
2.2 Support integration of agri-science and innovation in agricultural production.	Q1 2019
2.3 Support local food initiatives.	Q2 2019
2.4 Be an advocate for agriculture and foster agri-tourism.	Q2 2019
2.5 Develop a phased roll-out plan for the 2016 Agricultural Strategy	Q4 2019

KEY PERFORMANCE INDICATORS

1. Increase local producers' participation in local food organizations, including Alberta Farm Fresh Producers and the Alberta Farmers' Market Association.
2. Host educational events regarding local agriculture and food production.
3. Develop partnerships with agri-science agencies, such as Alberta Innovates, and educational institutions, such as the University of Alberta.



2018 BMO Farm Family Award winners, the ter Borgh family, at their family-run dairy operation.
(L to R): Johan, Riekje, Gerard and Berend ter Borgh (missing from photo is Miriam ter Borgh).

**\$3,182,562,016: TOTAL FARM CAPITAL REPORTED
FOR 2016 AT MARKET VALUE**

SOURCE: 2016 CENSUS OF AGRICULTURE

5. REGIONAL LEADERSHIP

Leduc County is a leader in regional planning and collaborative service delivery, which guides decision-making and resource allocation. The county is an advocate for partnering with other municipalities and orders of government to maximize regional opportunities.

FOCUS AREAS

- 5.1 Relationships with other municipalities are maintained and strengthened.
- 5.2 Leduc County remains a leader on regional initiatives through work with its partners.
- 5.3 Leduc County is recognized by other orders of government as a leading example of good municipal practice.

TIMELINE

- Q4 | 2018
- Q1 | 2021
- Q1 | 2021

KEY PERFORMANCE INDICATORS

- 1. Complete phase 1 of the Inter-Jurisdiction Cooperation Accord initiative.
- 2. Complete the Intermunicipal Planning Framework with the City of Edmonton and Town of Beaumont.
- 3. Complete intermunicipal collaboration frameworks and intermunicipal development plans with all neighbouring municipalities.





In our journey to continuously improve our strategic planning and community engagement frameworks, we launched a rich engagement campaign called 'Engage! Let's Talk Leduc' that asked our community to dream big.





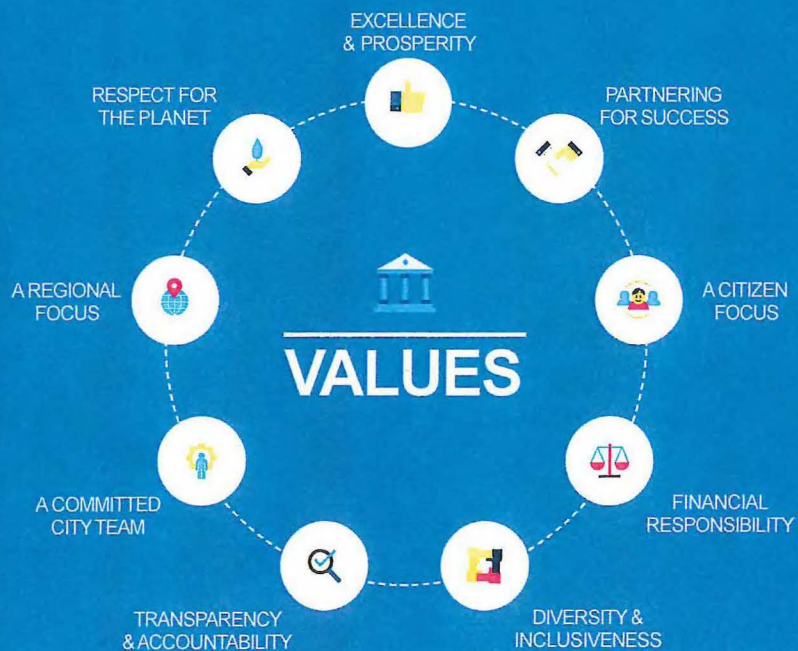
COMMUNITY VISION

A great life.
A caring community.
A thriving region.



CORPORATE MISSION

People.
Building.
Community.



These focus areas, along with their associated strategies and key performance indicators, will guide the growth of Leduc over the next four years and beyond.



A City Where People Want to Live, Work, and Play



A City with a Plan for the Future



An Economically Prosperous City and Region



A Collaborative Community-Builder and Regional Partner



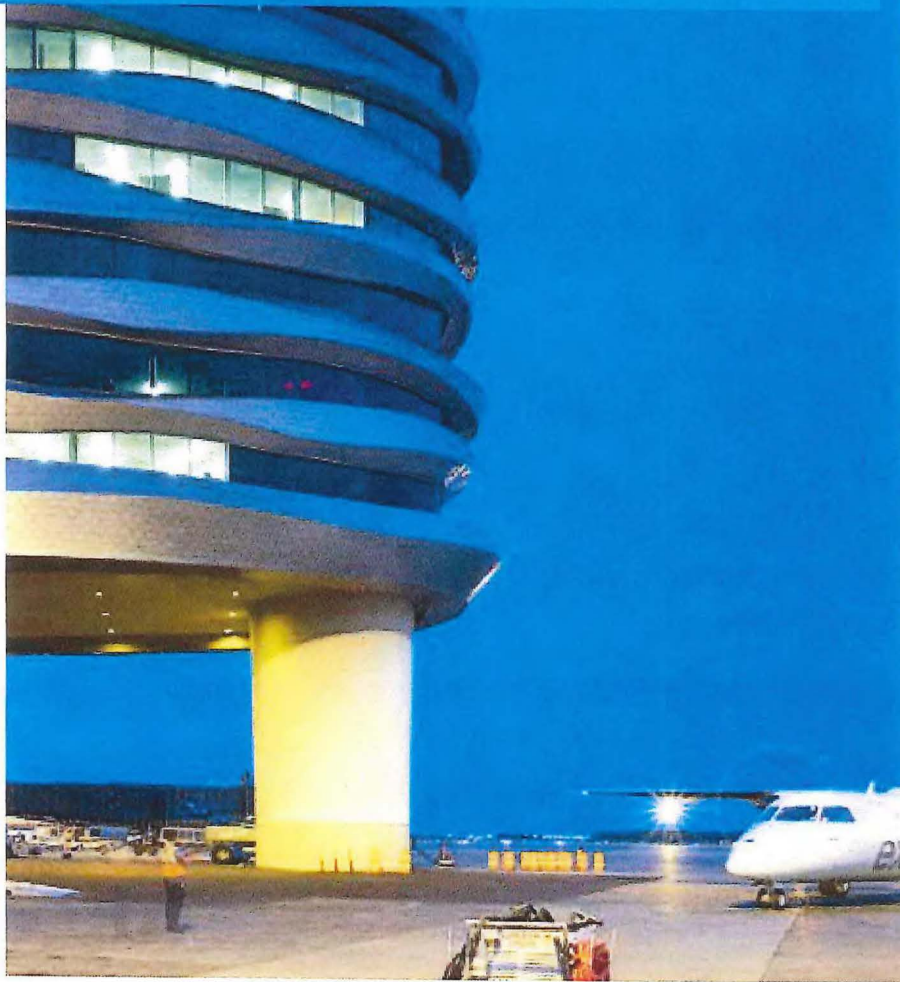
September 19, 2018

INTER-JURISDICTION COOPERATION ACCORD OVERSIGHT COMMITTEE

Shared Investment
for Shared Benefit

Agenda Item #8

SISB PROJECT ACTIVITIES



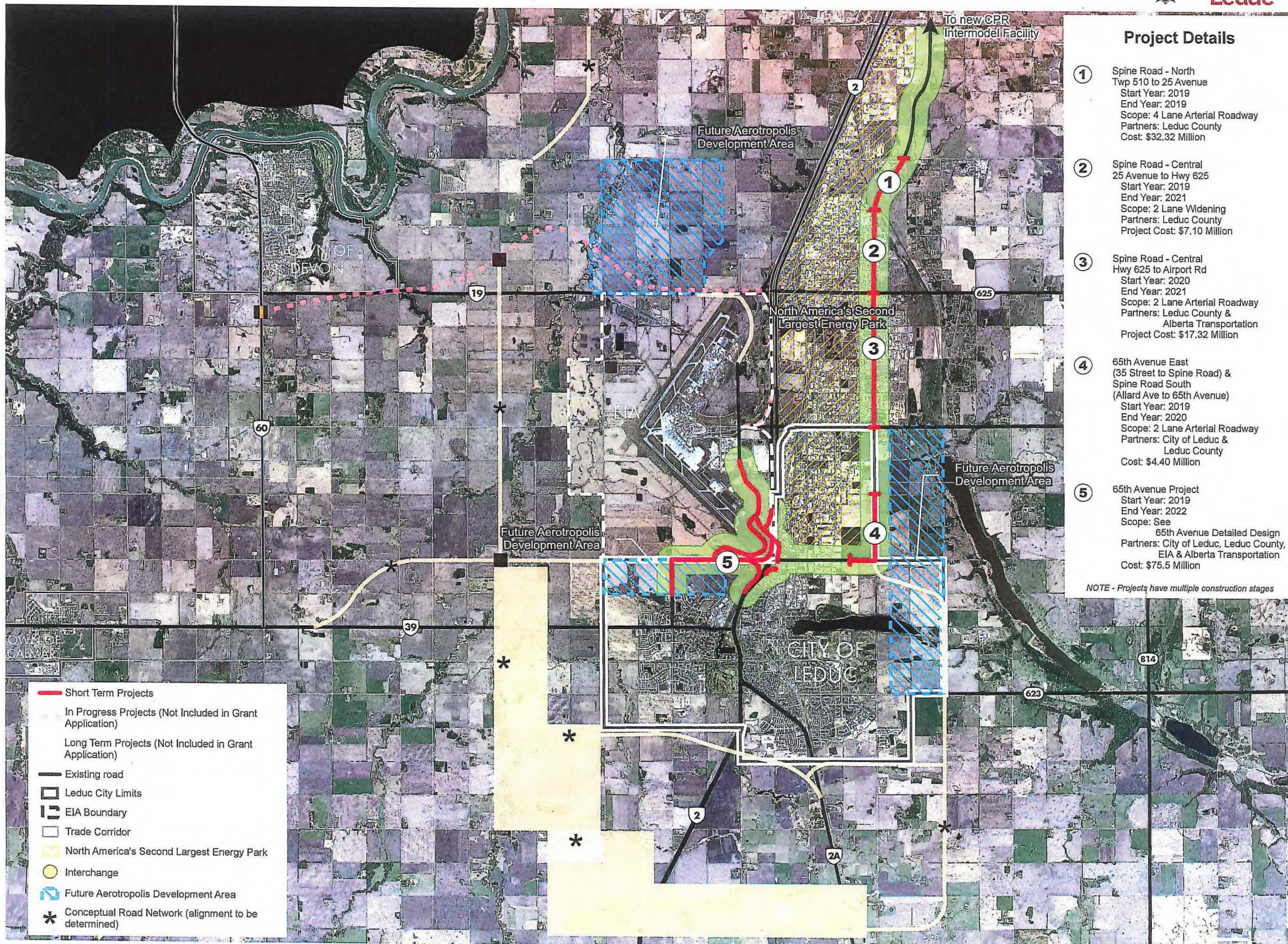
Activity #1: One -on-One Sessions

- **Mayors, CAO's, EIA Executive**
- PwC team will complete in person interviews during the **week of October 15 -19**

Concurrent during this week will be a workshop with PwC and the Working Group

Activity #2: Scoping Document

- Based on the interviews and WG workshop , PwC will provide a Scoping Document on **October 26th**
- Approval of the Scoping Document by the WG and Oversight Committee on **November 2nd (one week turnaround)**
- The Scoping Document serves as the blueprint for the SISB conceptual model



Project Details

- ① Spine Road - North
Twp 510 to 25 Avenue
Start Year: 2019
End Year: 2019
Scope: 4 Lane Arterial Roadway
Partners: Leduc County
Cost: \$32.32 Million
- ② Spine Road - Central
25 Avenue to Hwy 625
Start Year: 2019
End Year: 2021
Scope: 2 Lane Widening
Partners: Leduc County
Project Cost: \$7.10 Million
- ③ Spine Road - Central
Hwy 625 to Airport Rd
Start Year: 2020
End Year: 2021
Scope: 2 Lane Arterial Roadway
Partners: Leduc County & Alberta Transportation
Project Cost: \$17.32 Million
- ④ 65th Avenue East
(35 Street to Spine Road) & Spine Road South
(Allard Ave to 65th Avenue)
Start Year: 2019
End Year: 2020
Scope: 2 Lane Arterial Roadway
Partners: City of Leduc & Leduc County
Cost: \$4.40 Million
- ⑤ 65th Avenue Project
Start Year: 2019
End Year: 2022
Scope: See
65th Avenue Detailed Design
Partners: City of Leduc, Leduc County, EIA & Alberta Transportation
Cost: \$75.5 Million

NOTE - Projects have multiple construction stages

- Short Term Projects
- In Progress Projects (Not Included in Grant Application)
- Long Term Projects (Not Included in Grant Application)
- Existing road
- Leduc City Limits
- EIA Boundary
- Trade Corridor
- North America's Second Largest Energy Park
- Interchange
- Future Aerotropolis Development Area
- * Conceptual Road Network (alignment to be determined)