

**NOTES OF THE CITY OF LEDUC
COMMITTEE-OF-THE-WHOLE MEETING**

Monday, May 6, 2019

Present: Mayor B. Young, Councillor B. Beckett, Councillor G. Finstad,
Councillor B. Hamilton, Councillor L. Hansen, Councillor T. Lazowski,
Councillor L. Tillack
Also Present: P. Benedetto, City Manager, S. Davis, City Clerk

1. CALL TO ORDER

Mayor B. Young called the meeting to order at 5 pm.

2. APPROVAL OF AGENDA

MOVED by Councillor L. Tillack

That the Committee-of-the-Whole approve the agenda as presented.

Motion Carried Unanimously

3. ADOPTION OF PREVIOUS NOTES

**3.1 Approval of Notes of the Committee-of-the-Whole Meeting held Monday,
April 29, 2019**

MOVED by Councillor L. Hansen

That the notes of the Committee-of-the-Whole meeting held on Monday, April 29, 2019, be approved as presented.

Motion Carried Unanimously

4. DELEGATIONS & PRESENTATIONS

There were no delegations or presentations.

5. BUSINESS ARISING FROM PRESENTATIONS

6. IN-CAMERA ITEMS

MOVED by Councillor L. Hansen

That Committee-of-the-Whole move In-Camera at 7:30 pm.

Motion Carried Unanimously

6.1 Intermunicipal Projects Update/Strategic Planning

FOIP s. 19

MOVED by Councillor L. Hansen

That Committee-of-the-Whole move In-Public at 8:09 pm.

Motion Carried Unanimously

7. RISE AND REPORT FROM IN-CAMERA ITEMS

7.1 Intermunicipal Projects Update/Strategic Planning FOIP s. 19

Committee members discussed contractual matters.

8. REPORTS FROM COMMITTEE & ADMINISTRATION

8.1 Downtown Parking Study

J. Brown, Planning Intern, introduced J. Candlish, J. Culling and T. Lippiatt, University of Alberta students who carried out the Downtown Parking Study.

J. Candlish, J. Culling and T. Lippiatt made a PowerPoint presentation (Attached). Drone footage and stopwatch data (clocking in and out of vehicles) provided the required results that were presented. Eight recommendations were made.

J. Candlish, J. Culling and T. Lippiatt answered the Committee's questions.

8.2 eSCRIBE Update for May 6, 2019

C. Kuzio, Legislative Officer and eSCRIBE Project Lead, made a presentation providing an update on the implementation of the eSCRIBE meeting management system.

C. Kuzio and S. Davis, City Clerk, answered the Committee's questions.

Administration will:

- look into problems experienced by Committee members when opening the PowerPoints attached to the agenda; and

- confirm Committee members will be able to search past reports and PowerPoints separately.

8.3 65 Avenue Interchange Fly-Through Video

Mayor B. Young advised that more detailed information has been requested by the Federal Government to strengthen the City of Leduc's grant application. Administration is working to obtain the required information.

S. Olson, Director, Engineering, presented a video showing the virtual 65th Avenue Interchange flyover which was produced by the City of Leduc, Alberta Transportation, Edmonton International Airport and Stantec. The video will be made available to the public within the next 2-3 weeks. Along with the video there will be messaging that Provincial and Federal funding is required to move the 65th Avenue Interchange forward.

S. Olson answered the Committee's questions.

8.4 Downtown Capital Improvements Update

K. Woitt, Director, Planning and Development, made a PowerPoint presentation (Attached) on the Downtown Capital Improvements Update from the beginning to the present. K. Woitt advised that there are some expensive plans coming forward, in the amount of approximately \$5 million, and the funding options are still being looked at.

R. Sereda, A/General Manager, Infrastructure and Planning, answered the Committee's questions.

The Committee discussed options for finding ways to encourage retailers to move into the Downtown.

8.5 Community & Protective Services 2020 Budget Overview

P. Benedetto, City Manager, introduced the topic and requested Committee members to provide feedback on all the Delta presentations.

D. Melvie, General Manager, Community and Protective Services, introduced members of Administration in attendance. D. Melvie made a PowerPoint presentation (Attached), which included budget presentations from:

- RCMP and Enforcement Services
- Recreation
- Community and Social Development
- Leduc Fire Services

D. Melvie made a verbal presentation on Family and Community Support Services.

D. Melvie, C. Chisholm, Manager, RCMP Administration and Enforcement Services, J. Kamlah, Director, Recreation Services, C. Bole, Corporate Performance Advisor, R. Sereda, A/General Manager, Infrastructure and Planning, J. Cannon, Director, Finance, G. Clancy, Fire Chief / Director, Fire Services, D. Brock, Director, Community and Social Development, and P. Benedetto answered the Committee's questions.

Due to the current financial climate of the region, a business case will not come forward for a second School Resource Officer, and Mayor B. Young will write a letter to the School Boards advising the same.

Administration will work on obtaining a grant for a third party to write a business case for a Culture Development Coordinator to come forward at a later date.

Committee members provided their feedback on the Delta Reports that have been brought forward, advising that the process has been beneficial.

P. Benedetto advised that Administration is looking for ways to cut \$1.5 million from operating budgets to meet a tax revenue increase in 2020 of between 2 - 3%, as directed by Council. Administration is also faced with the challenge of keeping up with expenditure pressures. I. Sasyniuk, General Manager, Corporate Services, spoke to the budget timelines coming forward.

P. Benedetto answered the Committee's questions.

9. GOVERNANCE

There were no items.

10. COUNCIL CALENDAR UPDATES

There were no items.

11. INFORMATION ITEMS

There were no information items.

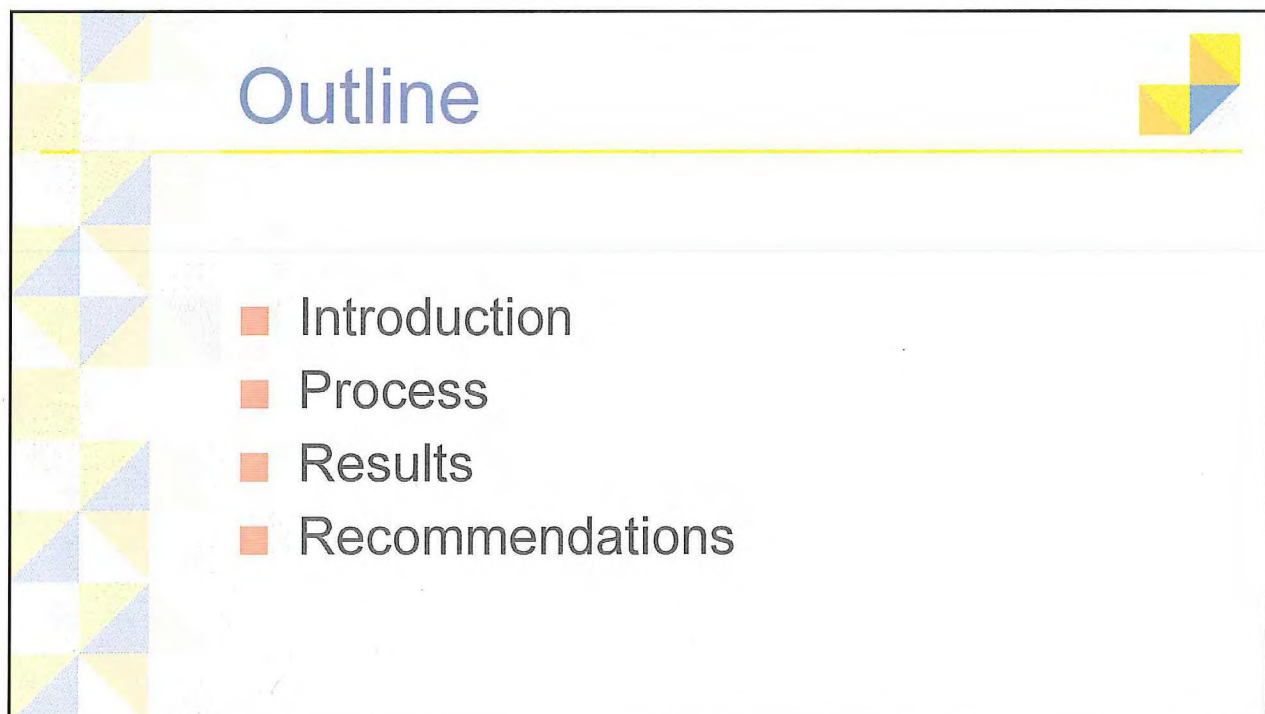
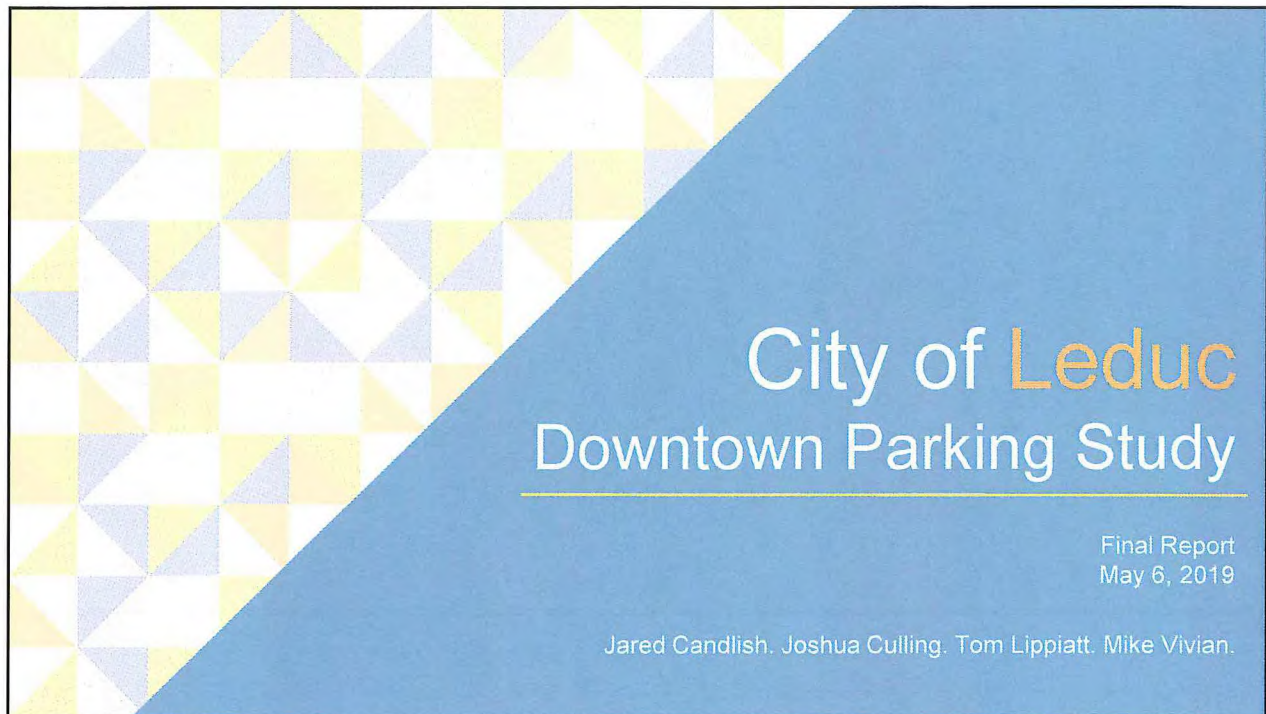
12. ADJOURNMENT

The meeting adjourned at 8:10 pm.

“Original Signed”

B. YOUNG, Mayor
“Original Signed”

S. DAVIS, City Clerk



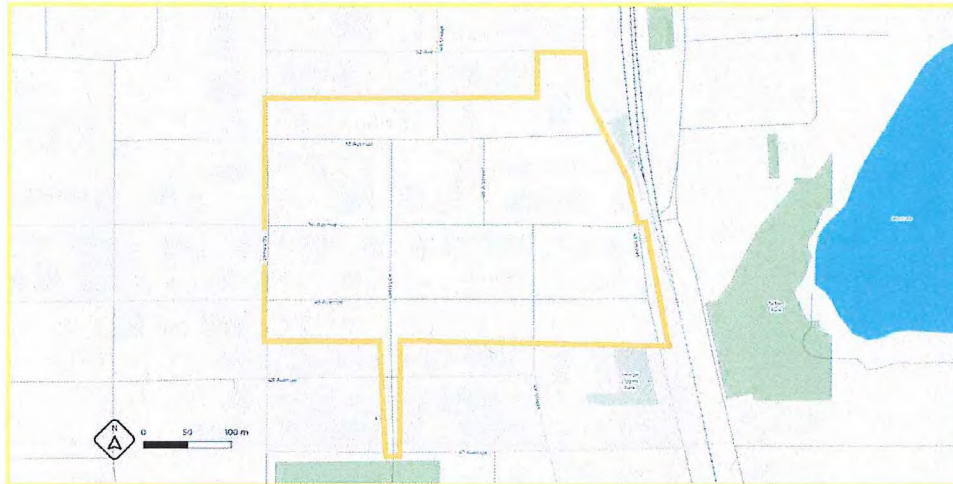


Introduction.

Objectives and Scope

- Assessment Of Current Parking Supply And Demand
- Develop A Set Of Recommendations
- Academic Lit. Review / Municipal Scan

Study Area



Process.



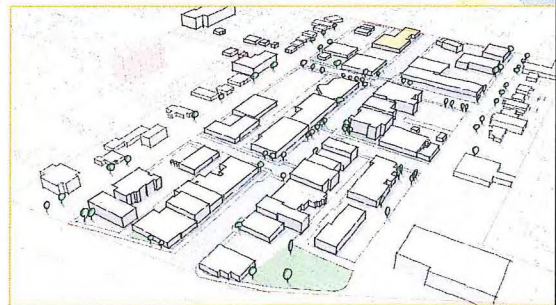
Innovation

- Leduc challenged us to innovate
- Utilizing a drone provided theoretical advantages
- It was also an original approach



Data: Occupancy

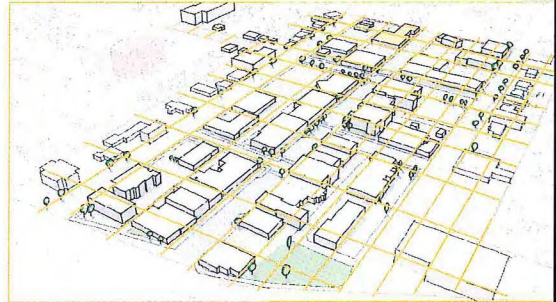
- Drone flight: Wednesday and Saturday; 8 AM – 6 PM
- Flight Path: Grid pattern throughout study area





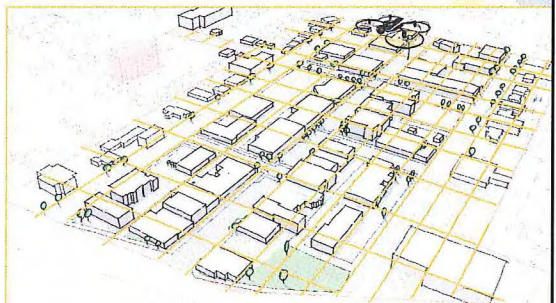
Data: Occupancy

- Drone flight: Wednesday and Saturday; 8 AM – 6 PM
- Flight Path: Grid pattern throughout study area



Data: Occupancy

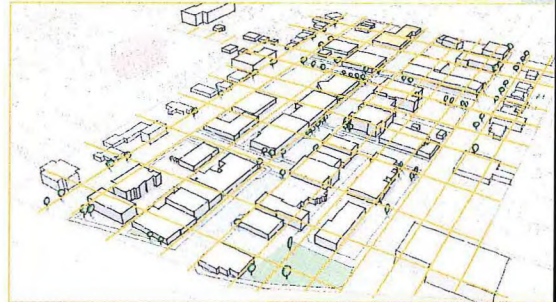
- Drone flight: Wednesday and Saturday; 8 AM – 6 PM
- Flight Path: Grid pattern throughout study area





Data: Occupancy

- Drone flight: Wednesday and Saturday; 8 AM – 6 PM
- Flight Path: Grid pattern throughout study area



Data: Duration

- Acquisition: Stopwatch
- Processing: Directly into Excel
- 577 data points; six areas





Data: Summary

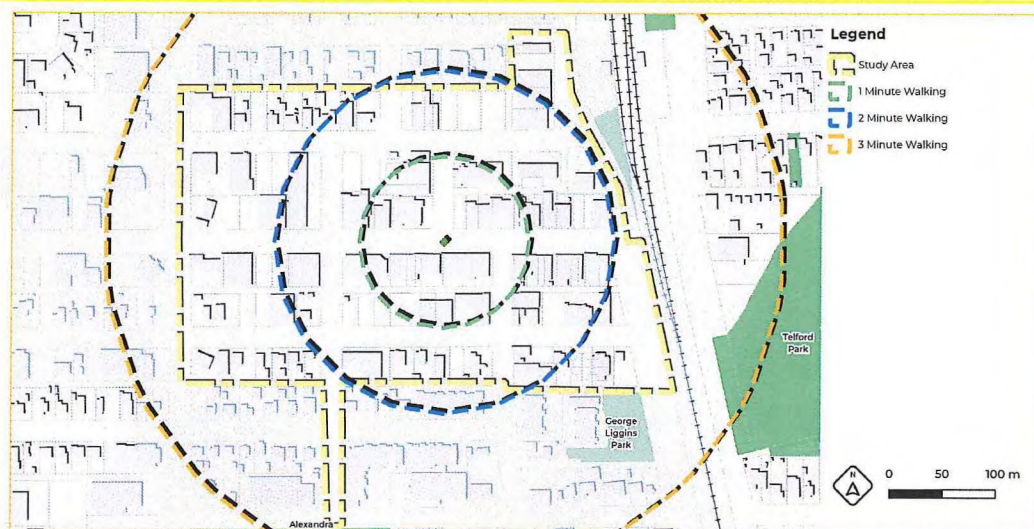
1. Drone images for **occupancy data**
2. Stopwatch data for **duration data**



Results.

Phase One: Current State

Walking Distance Buffer

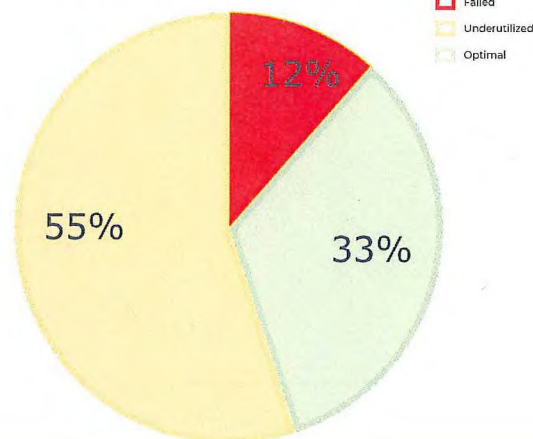


Wayfinding

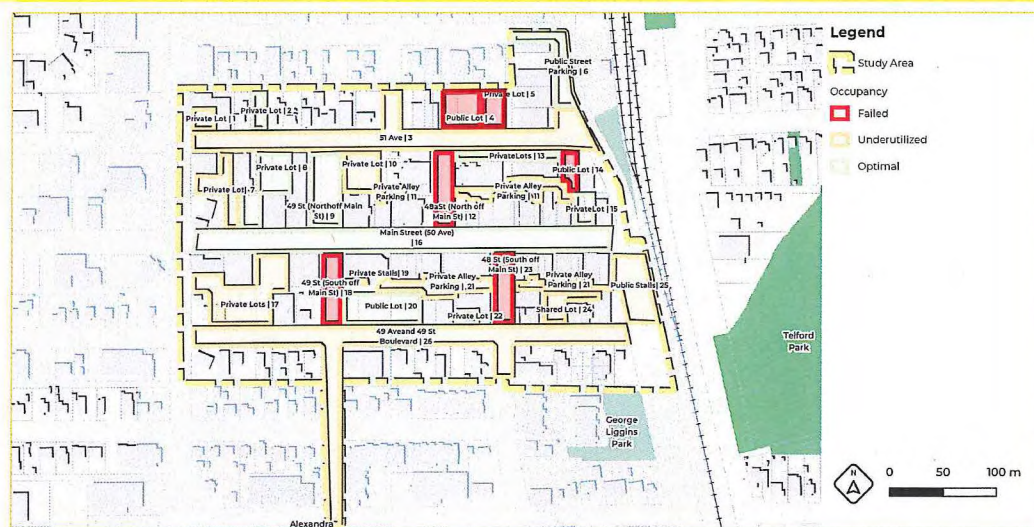


Phase Two: Duration & Occupancy

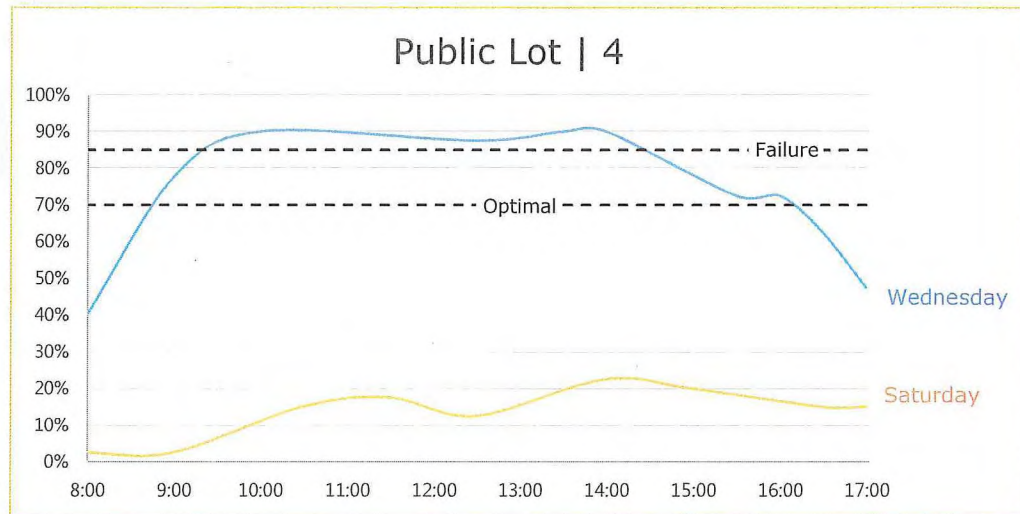
Occupancy



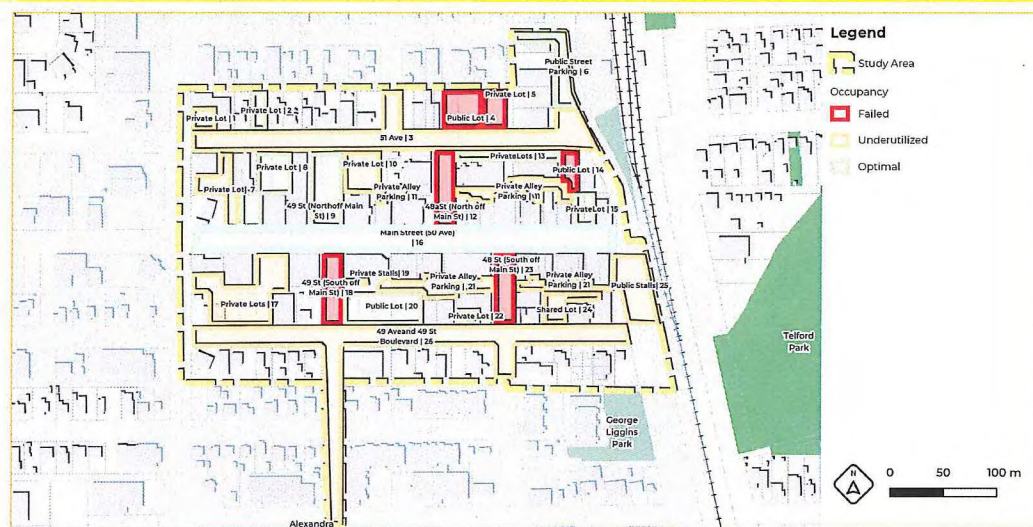
Occupancy



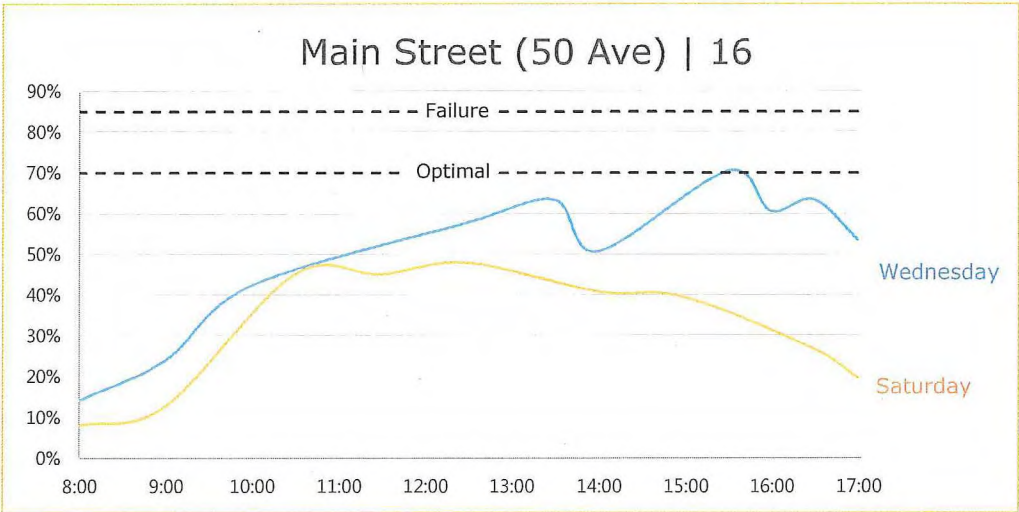
Occupancy



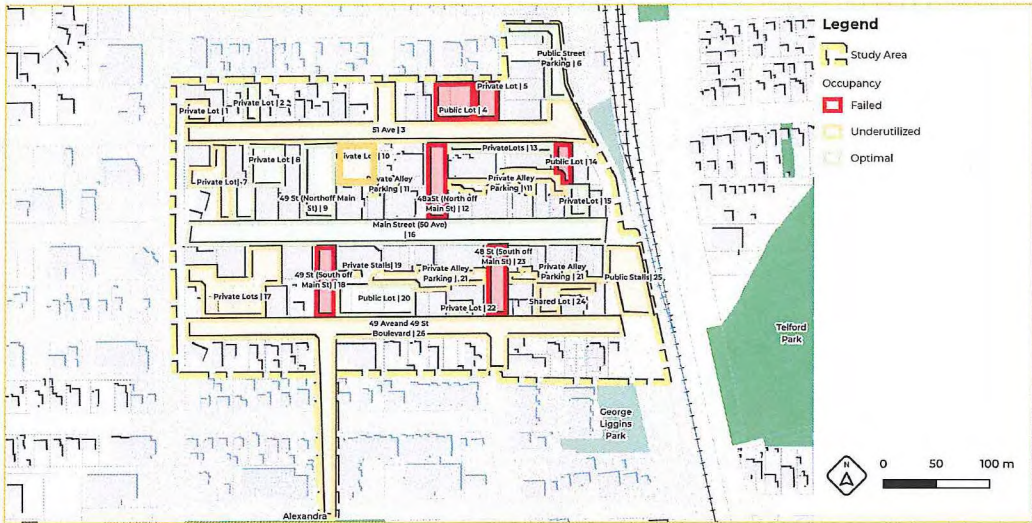
Occupancy



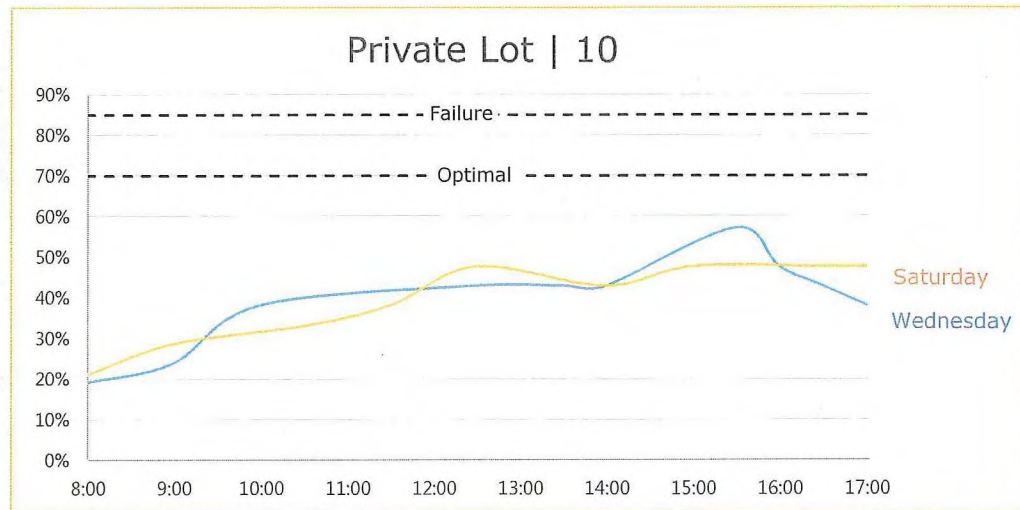
Occupancy



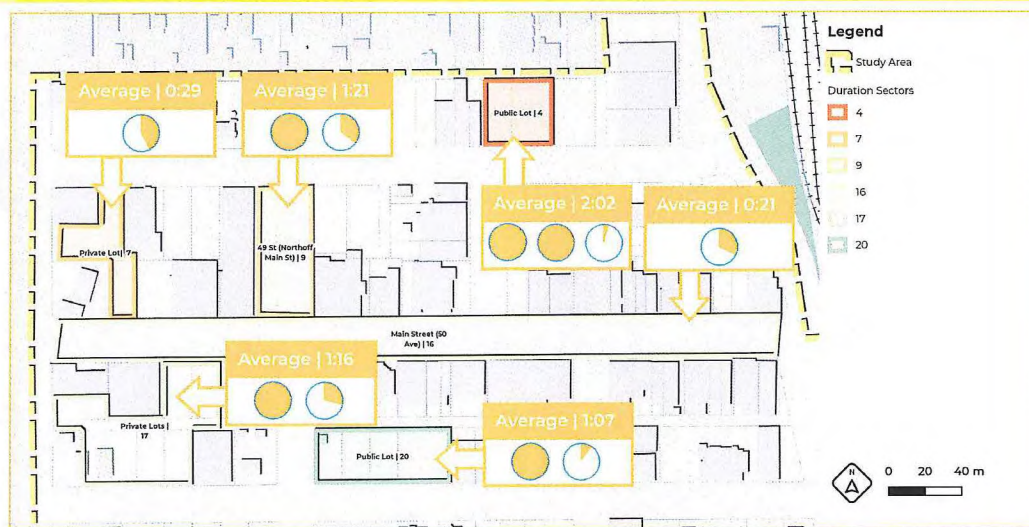
Occupancy



Occupancy

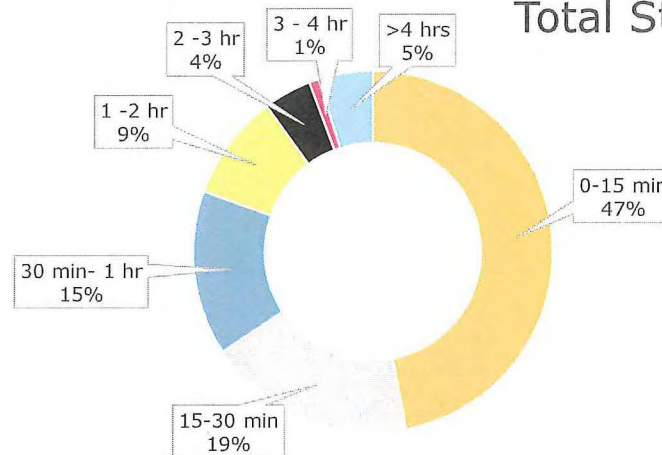


Duration



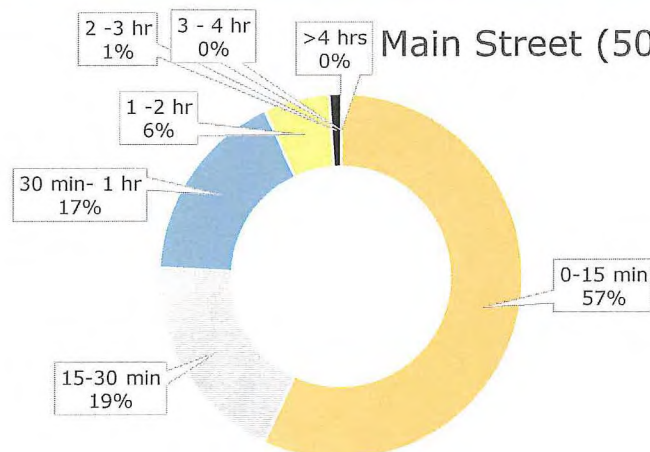
Duration

Total Study Area



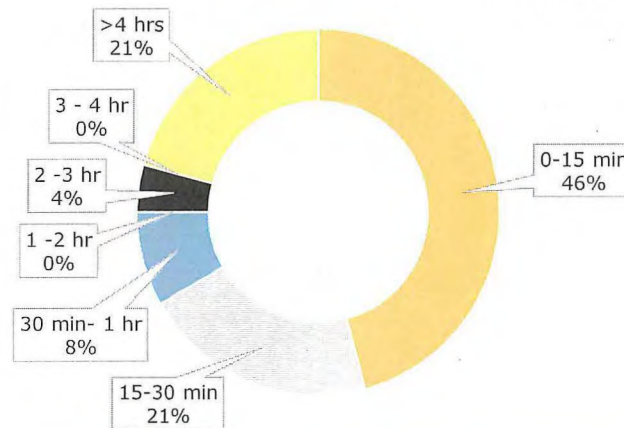
Duration

Main Street (50 Ave) | 16



Duration

Public Lot | 20



Analysis Summary

- Study area does not have a supply or over stay issue
- **But:** certain areas are in a state of failure
- **Interestingly:** Stay often short; generally parked in correct area



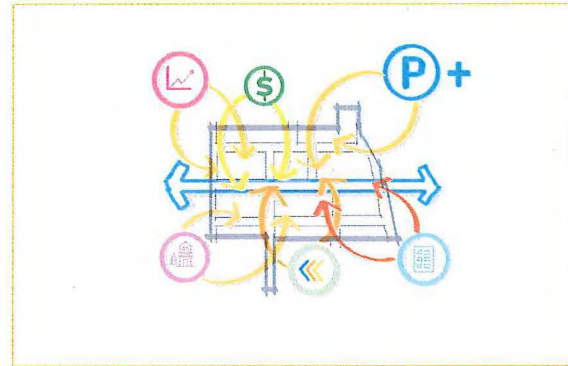
Recommendations.

8 Recommendations

1. Communication and Education Campaign
2. Add stalls in the North-East Portion of the Study Area
3. Introduce Rapid Parking Stalls
4. Future downtown condo development (long-term)
5. Targeted and Consistent Enforcement
6. Network Analysis
7. Pricing Parking (long-term)
8. Ongoing Analysis

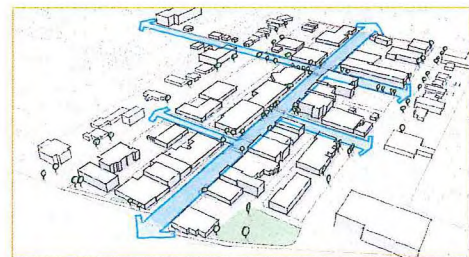
8 Recommendations

1. Communication and Education Campaign
2. Add stalls in the North-East Portion of the Study Area
3. Introduce Rapid Parking Stalls
4. Future downtown condo development (long-term)



Communication and Engagement

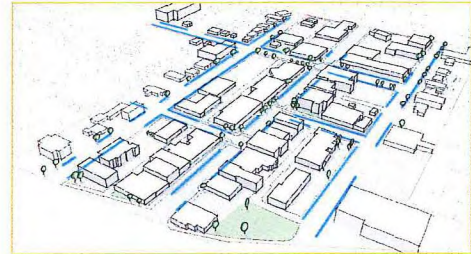
*A branded, robust, and multi-pronged communication and education campaign should be developed and implemented to achieve community and stakeholder **buy-in**, community and stakeholder **ownership** of parking management in downtown Leduc, and to **influence** and **reinforce** desired **parking behaviours** of the users of downtown Leduc.*



Communication and Engagement

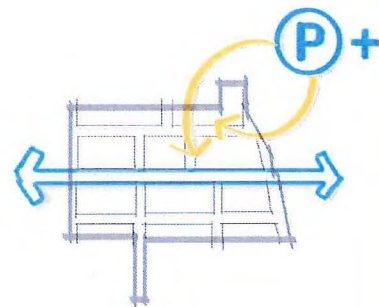
Actions:

- Parking Map
- Leduc.ca sub-page
- Wayfinding



Additional Parking

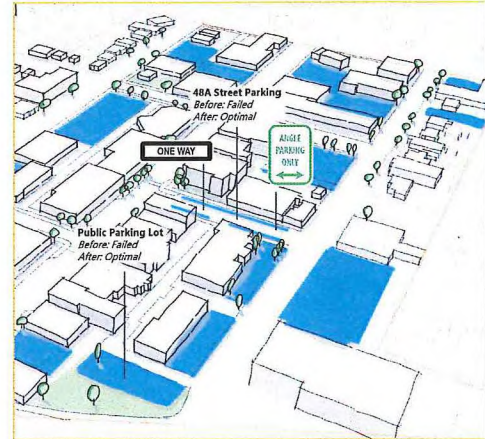
Provide **additional parking** to areas in failure to **relieve** the demand.
Specifically: the **north-east** portion of the study area.



Additional Parking

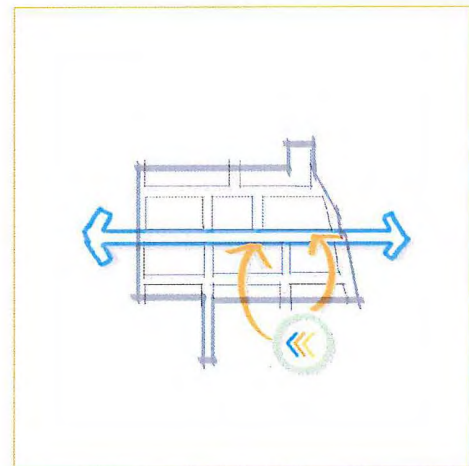
Actions:

- Convert 48a St. (between 50 Ave. and 51 Ave) into a one-way street and angle parking installed along its western edge
- If possible, parking supply should be expanded in the NE of the study area.



Rapid Parking

Introduce **15 min.** maximum parking stalls to **50 Ave.** to accommodate the use time that was **observed** in the area.



Rapid Parking

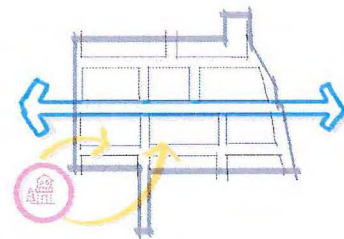
Actions:

- Identify suitable stalls on main street (at least 1 stall per block, located on both the North and South sides of 50 Ave)
- Mark stalls with rapid parking signs
- Enforce at same frequency as general area



Future Condo Development

Future development in the study area should consist of low-rise **apartments** with **underground parking**, and that future expansion of the **public parking** supply should be located **below** these buildings.



Slide 39

GU1 We should choose which graphic we are using, it is different in the report an in the presentation

Guest User, 4/6/2019

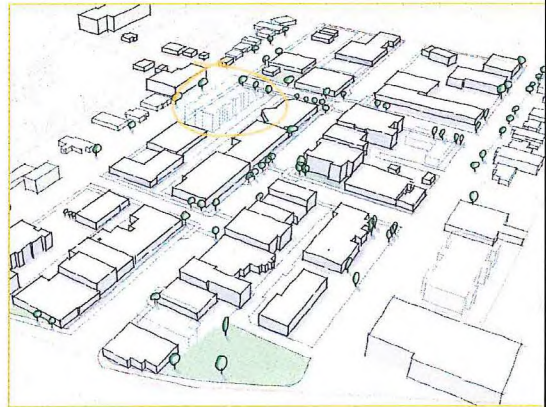
JC1 Yah..I feel like if the sign doesn't say the time limit it is only useful to locals. Which is why I tossed these ones in...It seems too late in the process to be fiddling with specific design details. And I should probably just use the nice ones. I was just trying to anticipate a question around that (also, we indicate in the report content that one of our criticisms of the signs is that they do not indicate what type of parking is being directed to...and again..the only way to really address type is to have a time limit attached...

Joshua Culling, 4/7/2019

Future Condo Development

Actions:

- *Rezone the public parking lot at 49 Ave. and 49St to MUN or MNC.*
- *Sell lot to developer with conditions (ensure underground parking).*
- *Consider purchasing target lots for similar development*



Summary.



Summary

- In the general area, there is not a supply or duration issue
- Specific regions are in failure and require intervention
- Public education/ adding stalls/
stall types/ future development.

Questions?





Gateway Light Standard:
Traditionaire (LED) by Fortis in Black Fluted Pole



Decorative LED String Lights:
Commercial Grade Globe Drop Lights

The conceptual drawings shown are for information purposes only and are subject to change at the time of construction due to factors such as budget, site conditions, etc.



Cloth Banners



Hanging Baskets



Wayfinding Kiosk

leduc main street: lighting & accessories (east of 50 street)

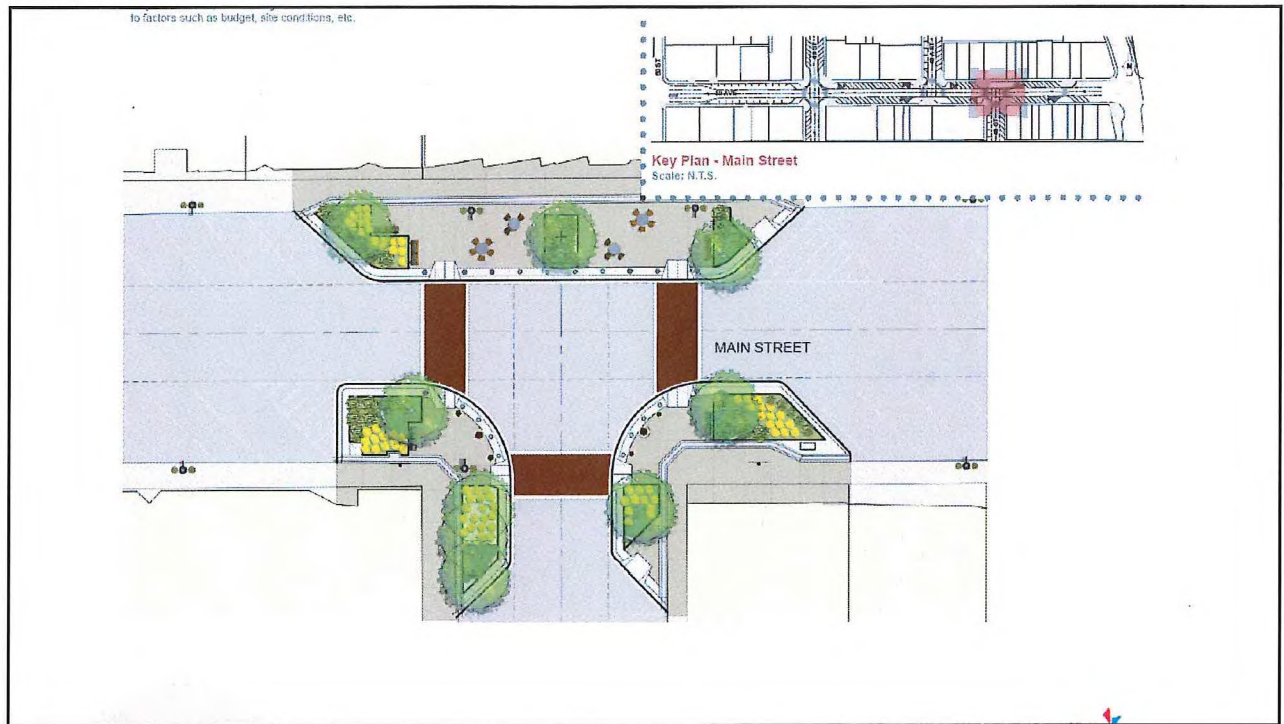


<p>Waste / Recycling / Organics</p>  <p>Stainless Steel Body Sandstone Texture</p> <p>Black Polyethylene Lid + Cover</p>	<p>Sidewalk Concrete</p>  <p>Dune</p>	<p>Backed Bench</p>  <p>Recycled plastic - brown</p> <p>Black Finetex</p>
<p>Bollards - Lit / Unlit</p>  <p>Black</p>	<p>Crosswalks</p>  <p>Chestnut</p> <p>White</p>	<p>Backless Bench</p>  <p>Recycled plastic - brown</p> <p>Black Finetex</p>
<p>Planters</p>  <p>Milstone</p>	<p>Drainage Grates</p>  <p>Cast Aluminum (unweathered)</p>	<p>Cluster Seating</p>  <p>Recycled plastic - brown</p> <p>Black Finetex</p>
<p>Bike Rack</p>  <p>Black Finetex</p>	<p>Tree Grates</p>  <p>Black</p>	<p>Cluster Seating</p>  <p>Recycled plastic - cherry</p> <p>Steel - titanium colour</p>

The conceptual drawings shown are for information purposes only and are subject to change at the time of construction due to factors such as budget, site conditions, etc.

educ main street: site furnishings - final selection





2020 Budget Overview/Changes Community & Protective Services

Committee of the Whole

May 6, 2019

Presented by:
Darrell Melvie, General Manager
Community & Protective Services



Who are we...

Community & Protective Services

RCMP Administration
& Leduc Enforcement
Services

Community & Social
Development

Recreation

Fire Services

RCMP and Enforcement Services



School Resource Officer (SRO)

- Advocacy from
 - Leduc Composite High School Parent Council,
 - Notre Dame School, and
 - Black Gold Regional Schools
- Cost estimated at \$105K to \$160K per year
- Administration is not intending to bring forward a business case

RCMP Resourcing

- 1 Member
- 1 Detachment Clerk

3

RCMP and Enforcement Services

Traffic Fines

- Actual traffic fines in 2018 were \$830K
- 2020 fine revenue is estimated at \$1,320M
- Administration will continue to monitor – may need to adjust the 2020 budget



4

Recreation

LRC – Leases / Sponsorship / Advertising



- Increase in advertising revenue of \$30K
- Anticipated leasehold revenue increase of \$40K to \$50K in 2020

Schools Joint Use Agreement

- Black Gold Regional Schools and St. Thomas Aquinas Regional Schools
- Potential reduction on LRC revenues - \$20K to \$30K

5

Recreation

Children and Youth Access

- Summer 2019:
 - Grade 8 & 9 free summer access memberships
 - All youth access (0-17) specified low use hours
- Focus – school access – fall 2019
- September 2020: Full year student memberships – not proceeding
- Program coordinator deferred to post 2020



6

Recreation

LRC Facility Monitoring and Security

- RCMP calls for service:

2019 (to March 31):	30
2018:	115
2017:	111
- Options
 - Additional staff allocation through LES at select times
 - Contracted 3rd party security staffing, or
 - Enhanced classification of facility monitor to serve as security
- \$20K to \$60K



1

Community and Social Development

Arts, Culture and Heritage Business Plan

- Long term arts, culture and heritage master plan
- Culture Development Coordinator position enhanced services:
 - Culture Days
 - Community Organization Support
 - Collections and stewardship, heritage sites inventory / signage
 - Supporting shared programming between organizations



8

Community and Social Development

Outdoor Rink – Southfork

- Partnership with developer for a new outdoor rink in Southfork
- Cost \$200K
- Funding not currently allocated in budget



Community Partnerships

- Golf Course lands - Potential 2020 capital investment
- .25% to .35% tax impact (high level estimate)
- Would utilize full partnership investment budgeted for 2021

9

Leduc Fire Services

Fire Prevention Officer (FPO)

- 2016 County/City agreement to share the cost of Fire Prevention Officer
- 2019 County terminated agreement effective immediately
- \$65K impact on 2019 budget (.50 FTE)



10

Community and Protective Services

