

## Supplement to Leduc Detachment Motor Vehicle Collision Analytical Report dated 2018/10/02

### Intersection Safety Device (ISD) In Leduc

Automated traffic-enforcement technology is an important tool used to enhance traffic safety and is just one component within the traffic safety strategy used by the City of Leduc and the Leduc RCMP Detachment. Intersection Safety Devices will assist in moving Leduc towards the vision of having zero fatalities and major injuries caused by collisions.

ISD's were installed in Leduc to reduce serious and fatal collisions. Numerous studies have shown that they are effective in reducing serious collisions at intersections. In addition, these devices have a spillover benefit on the surrounding roadways of reducing collisions and lowering speeds.

Total collisions for 2018 based on data as of September 30, 2018, are projected to be 782 which would be 7% higher than 2017 totals.

ISD's in Leduc are located at:

1) Highway 2A and 50<sup>th</sup> Street (East and Westbound)

2017 – 15 Collisions at intersection

2018 (YTD Sept 30<sup>th</sup>) – 11 Collisions at intersection (on pace for 14 collisions for 2018)

This location has the additional risk of higher severity of injury due to the higher speeds travelling east/west through the intersection.

2) 50<sup>th</sup> Street and 50<sup>th</sup> Avenue (Southbound)

2017 – 10 Collisions at intersection

2018 (YTD Sept 30<sup>th</sup>) – 15 Collisions at intersection (on pace for 20 collisions for 2018)

High collision location.

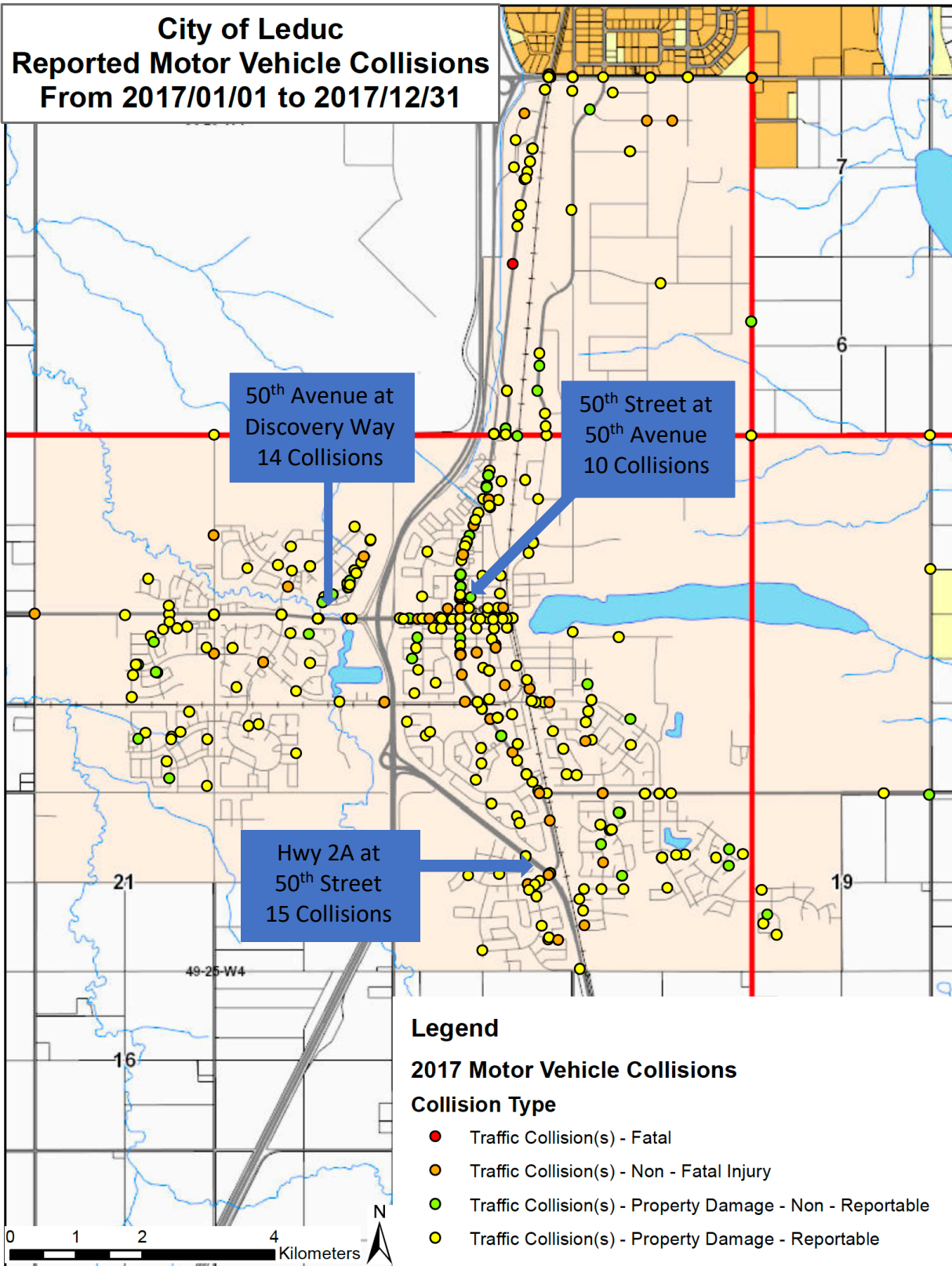
3) 50<sup>th</sup> Avenue at Discovery Way (East and Westbound)

2017 – 14 Collisions at intersection

2018 (YTD Sept 30<sup>th</sup>) – 25 Collisions at intersection (on pace for 33 collisions for 2018)

High collision location.

**City of Leduc  
Reported Motor Vehicle Collisions  
From 2017/01/01 to 2017/12/31**



50<sup>th</sup> Avenue at  
Discovery Way  
14 Collisions

50<sup>th</sup> Street at  
50<sup>th</sup> Avenue  
10 Collisions

Hwy 2A at  
50<sup>th</sup> Street  
15 Collisions

**Legend**

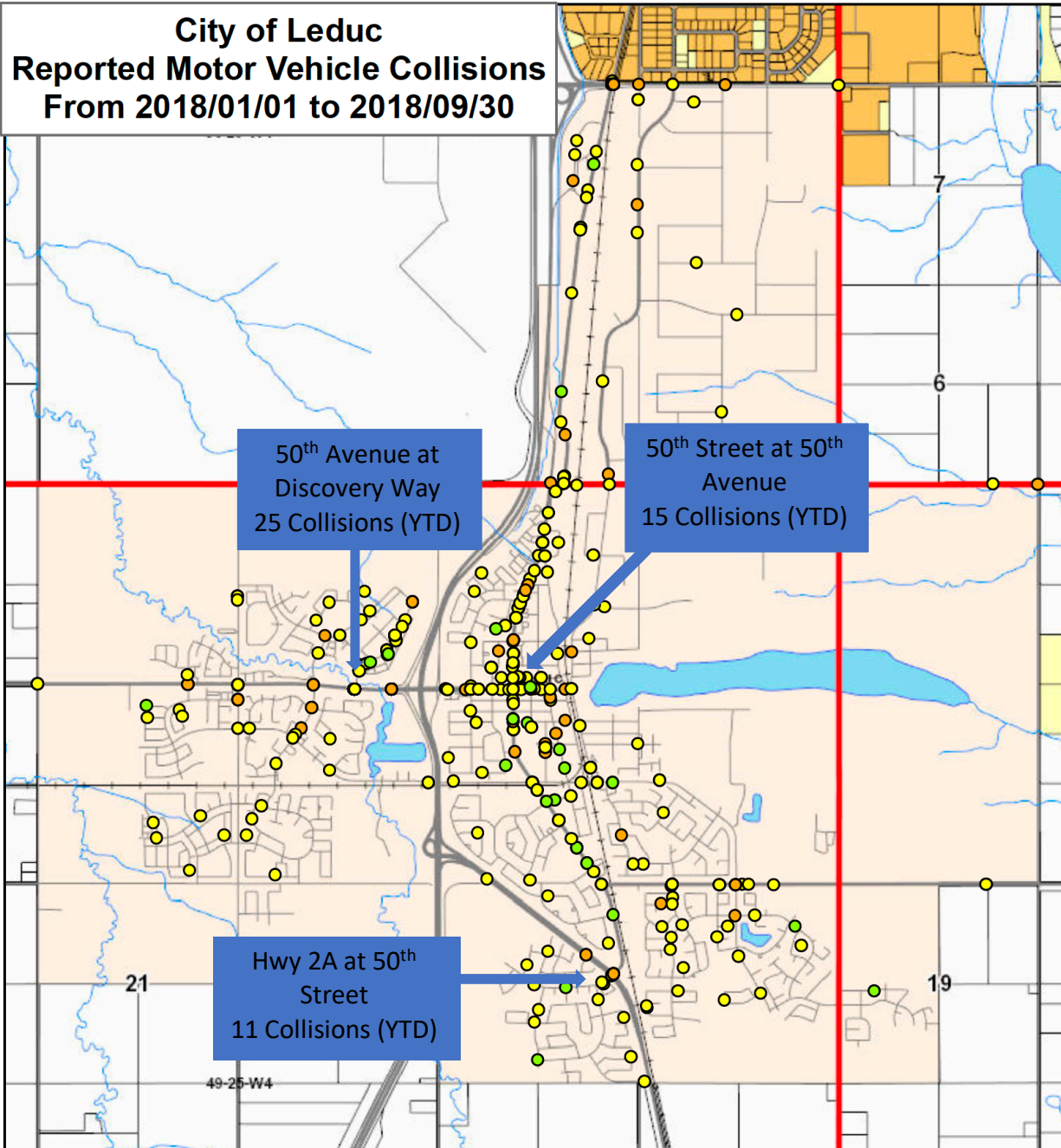
**2017 Motor Vehicle Collisions**

**Collision Type**

- Traffic Collision(s) - Fatal
- Traffic Collision(s) - Non - Fatal Injury
- Traffic Collision(s) - Property Damage - Non - Reportable
- Traffic Collision(s) - Property Damage - Reportable



**City of Leduc  
Reported Motor Vehicle Collisions  
From 2018/01/01 to 2018/09/30**



50<sup>th</sup> Avenue at  
Discovery Way  
25 Collisions (YTD)

50<sup>th</sup> Street at 50<sup>th</sup>  
Avenue  
15 Collisions (YTD)

Hwy 2A at 50<sup>th</sup>  
Street  
11 Collisions (YTD)

**Legend**

**2018 Motor Vehicle Collisions**

**Collision Type**

- Traffic Collision(s) - Non - Fatal Injury
- Traffic Collision(s) - Property Damage - Non - Reportable
- Traffic Collision(s) - Property Damage - Reportable

